



SECURITY

Smart CITIES

The CAPABILITIES



REMOTE SURVEILLANCE

Ground-based or vehicle-mounted video surveillance systems are now capable of delivering very high-definition, precisely geolocated imagery, enabling accurate identification of individuals or vehicles within areas requiring protection. These imaging sensors are now able to automatically track moving targets, establish their trajectories and detect abnormal or suspicious behaviour. Their effectiveness can be further enhanced through the use of adapted lighting systems. Cameras supplement and reduce the workload of human resources. They have a proven deterrent effect and provide reliable evidence and factors of identification of individuals involved in offences or disturbances to public order.



SUPERVISION AND COMMAND CENTRES

A supervision and command centre is essential to the security of public spaces. Combined with video-surveillance systems, it integrates command, control and coordination functions, enabling situation assessment, response management and the transmission of information to the relevant authorities. It also provides access to the reference data required by law enforcement agencies and emergency services during operations, such as city and building plans, energy and water networks, digital models, databases and directories. It also offers superior synthesis capabilities, including perimeter-wide searches, people counting and satellite or aerial views. Finally, it enables comprehensive information sharing across functions.



SECURE COMMUNICATIONS

Network connectivity is a core component of any Safe City project. It enables commanders to send out orders, coordinate the actions of responders, receive the necessary information and report to the relevant authorities. It is essential that the network be fast and secure, and capable of carrying voice, data, and video without risks of transmission delays, fluctuations, or packet loss. Scalability must be built in to support progressive expansion as new needs and uses emerge. Cooperation between stakeholders is also critical to ensuring an effective response to any incident. This cooperation must include access to external data sources, such as identity document records or specific operational procedures for non-standard incidents. Coordination with other actors outside the security domain (such as traffic management services) is also a key factor in improving effectiveness.



DATA AND DIGITAL INFRASTRUCTURE SECURITY

Information protection covers three main areas of concern. The first relates to safeguarding the integrity of systems. The second focuses on protecting data against theft or corruption, particularly personal data of residents and users of public services. The compromise or theft of such data can have very serious consequences for victims in their everyday lives. The third area concerns internal control, in response to the risk of unauthorised access to data and its misuse. It is therefore essential to implement access and activity traceability systems in order to identify and address any breaches of ethical rules.



▶ **ELECTRONIC SENSORS**

This category of sensors includes a wide range of data-collection devices. The most common are detectors for smoke, heat, liquid or gas leakages, intrusion, traffic counting and vibrations, as well as sensors for ambient light, rain, fog, etc. This category also includes system status indicators (such as equipment failures, including traffic lights) and vehicle tracking systems. These sensors can ensure continuous monitoring without human intervention, including in places that may be unoccupied, concealed or difficult to access (such as sewers or technical facilities). The very diverse information they provide enables an alert management centre to take the most appropriate decisions in the context. Finally, they significantly reduce maintenance by triggering interventions only when necessary.



▶ **SENSOR FUSION**

The purpose of this function is to integrate data provided by different types of sensors. The first level of integration consists of producing composite images or displaying an image over a map. The second level involves using selected information to trigger automated actions, such as designating a target for another sensor, or searching for corroborating information. In the future, with the support of deep learning, this function is expected to evolve into an abstraction and decision-support layer, shifting the focus away from specific data or sensors to larger events, such as an accident, traffic congestion or a lighting failure. It will then be possible to integrate a business logic into the system, helping operators manage incidents by proposing appropriate decisions and response plans.










▶ **COUNTER-UAS SOLUTIONS**

Protecting public spaces during certain events (large public gatherings, sporting events, etc.), as well as sensitive sites, against the threat posed by UASs requires the deployment of appropriate detection and neutralisation capabilities. These include systems enabling scalable and controlled responses, comprising electronic means, kinetic or laser solutions, and other types of countermeasures adapted to the situation, all integrated into command & control (C2) systems to ensure safe operation. The solutions prioritise precision, collateral risk management and effectiveness against different types of UASs.

INDEX



	Remote Surveillance	Supervision and Command Centres	Secure Communications	Data and Digital Infrastructure Security	Electronic Sensors	Sensor Fusion	Counter-UAS Solutions
COMPANIES							
ADVANTEN p.6			●				
CEGELEC DÉFENSE p.7		●					
EGIDIUM TECHNOLOGIES p.8		●					
ELECDAN p.9		●					
EVIDEN p.10		●	●				
IMPACT p.11		●					
KONTRON p.12		●		●			
MC2 TECHNOLOGIES p.13							●
METRAVIB DEFENCE p.14					●	●	
MUSTHANE p.15							●
NUANCES TECHNOLOGIES p.16						●	●
PROENGIN p.17		●					
VIRTUALBROWSER p.18				●			
VITEC p.19	●	●					
WARYME p.20		●	●				

MEMBERSHIP
directory

ADVANTEN

Advanten, a company of the ELNO Group, is a leading expert in the design of antennas and antenna systems for fixed and mobile, civil and military communications. The company provides high-technical-value equipment for constrained environments and offers, among other things, solutions for the drone sector, ensuring reliable transmissions in complex environments. From electronic board design to low-level software, Advanten mobilizes its expertise across its Cesson-Sévigné and Grenoble sites to meet the most demanding connectivity challenges.



COMET5G



The COMET5G is an active electronically scanned array antenna operating in the C-band.

Thanks to its advanced technology, the COMET5G stands out for its compactness and rapid beam-steering capabilities. Unlike traditional systems, it contains no mechanical parts, eliminating any risk of wear and tear and avoiding the use of RF rotary joints. It is a reliable and modern solution for high-tech radio communication needs.



OTA2



The OTA2 is a high-precision positioning solution designed by Advanten to guarantee an optimal data link between an aircraft and its ground station. Thanks to the smart integration of GNSS data and an Inertial Measurement Unit (IMU), the system steers the main lobe of the directional antenna in real-time with absolute reliability, even during dynamic maneuvers.

Protected by a rugged radome to withstand aerodynamic constraints, the OTA2 comes with an intuitive User Interface (UI/HMI) that allows for complete control and monitoring of flight and communication parameters. It is an essential piece of equipment for securing drone and aircraft missions that require uninterrupted data transfer.



EPA14



The EPA14 is a professional-grade directional antenna, specifically designed by Advanten for telemetry applications in harsh environments. This high-performance antenna array stands out for its exceptional electrical characteristics, offering a very low VSWR, controlled circular polarization, and reduced side-lobe levels for maximum signal accuracy.

Its rugged structure, protected by a high-resistance white PVC radome, guarantees total ingress protection against water and dust. Highly versatile, the EPA14 can be tripod-mounted or integrated into an automatic tracking system to ensure continuous beam orientation toward the aircraft. Combining mechanical endurance with radio reliability, it is the equipment of choice for securing critical data links between the ground and mobile systems.



Jérôme DIACRE | CEO
+33 (0)6 82 66 15 23
jerome.diacre@advanten.fr
www.advanten.fr
30 Rte de Fougères | 35510 Cesson-Sévigné | France



CEGELEC DÉFENSE

Your partner for Defense & Security

50 years of service dedicated to the protection of strategic infrastructure and operational support.

A European leader in technology services, Cegelec Défense leverages its expertise to support major fixed and mobile hardened infrastructure projects for Defense and Security.

Our domains of expertise: Protection & Security • Infrastructures & Networks • Mobile & Deployable Solutions • Mechatronics • Information Systems • Cybersecurity • Electromagnetic Control.

Specialists in Kinetic, EMP, CBRN, TEMPEST & CYBER protection.

COMPREHENSIVE PROTECTION OF CRITICAL & SENSITIVE INFRASTRUCTURES



As a designer and builder of security solutions, we provide a comprehensive and integrated approach dedicated to protecting and ensuring the resilience of sensitive sites and critical infrastructures (defense, industrial, energy, port, institutional) against physical, technological and hybrid threats.

Our multi-layer architectures combine detection, deterrence, access control, supervision and rapid response within hardened infrastructures. They ensure the protection of people, facilities and data while guaranteeing business continuity and resilience of critical systems.



Strengths

- Recognized expertise in defense environments and critical sectors
- Hardened infrastructures (shelters, Faraday cages, protected facilities)
- Capability to address multi-domain threats (intrusion, sabotage, drones, blast, EMP, CBRN)
- Interoperable, scalable and resilient solutions
- Comprehensive competencies in civil engineering, secured networks, command systems
- High level of customization and regulatory compliance
- Full support through operational readiness maintenance

Applications Areas

- Protection of defense sites and sovereign infrastructures
- Securing sensitive industrial facilities (energy, nuclear, defense)
- Protection of critical infrastructures (ports, airports, networks)
- Securing major events
- Protection of command centers and strategic installations

Let's Discuss Your Security Challenges



EGIDIUM TECHNOLOGIES

Egidium Technologies was founded in 2009 with the idea of adapting the concept of "situational awareness" from the military domain to security management.

By using data fusion to produce relevant information and offering a global view in 3D, these solutions aim to support security actors in adapting to evolving threats.

Egidium develops a software platform called Smart Shield ERP and cloud services from Hypervision.



SMART SHIELD ERP



Smart Shield ERP is a sovereign hypervision platform combined with a collaborative handrail that is much more than a tool: it is a digital, sovereign, and intelligent command center designed to secure, optimize and manage your critical operations with unparalleled efficiency.

Smart Shield ERP simplifies the supervision of your infrastructure by centralizing security, safety and all your sensors in a single solution. Smart Shield ERP is accessible via two complementary applications, which can be used together or independently: the WebApp and the WinApp.

Thanks to an immersive 3D mapping of the site or city, WinApp offers a faithful and dynamic representation of your environment. View instantly your sensors, their states, your cameras, your human resources geolocated and your incidents in real time, in an intuitive and operational interface.

The solution acts as a true digital command center, able to centralize and correlate all your field data for quick and informed decision-making. All information is unified on a single platform, allowing to move from reactive management to proactive and coordinated management.

Thanks to a powerful electronic Security log, you can follow in real time all incidents and events, with or without personalized forms. Each action is recorded, historized and easily exploitable, ensuring total transparency and better decision-making.

In the field, with the mobile application, increase efficiency thanks to advanced features:

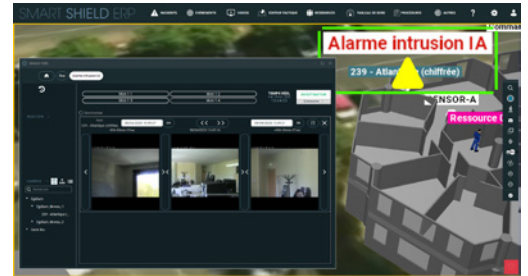
- Preparation and execution of rounds with real-time monitoring
- Precise geolocation, PTI (Lone Worker Protection) reporting and SOS alerts
- Instant visualization via an interactive 2D map with geocoding, displaying incidents, sensors, cameras, and resources

Finally, take advantage of a fully customizable dashboard and detailed statistics to analyze your performance, identify areas for improvement and manage your activity with precision.

A single platform. A global vision. Total control over your operations.

Smart Shield ERP also allows you to:

- Create and track scheduled tasks and events
- Automate your processes with incident-related workflows, triggered as soon as they are created (automatic or manual)
- Access live video streams directly from the interface for enhanced supervision



Boual Mickaël | Bid & Quality Manager
+33 (0)6 08 32 36 63
mickael.boual@egidium-technologies.com
www.egidium-technologies.com
Les algorithmes, Route de l'Orme Bâtiment
Pythagore | 91190 Saint Aubin | France

Denizot Laurent | CEO
laurent.denizot@egidium-technologies.com
https://www.egidium-technologies.com/
Les algorithmes, Route de l'Orme Bâtiment
Pythagore | 91190 Saint Aubin | France



ELECDAN

Founded in 1992, Elecdan is a key leader in the study and integration of multi-screen operator consoles and video walls dedicated to control rooms and centralized command posts (PCC).

SECURE REMOTE CONTROL OF COMPUTERS AND DISPLAY MANAGEMENT ON VIDEO WALLS.



By creating a “personal video wall” concept, operators can consolidate information sources across multiple screens, thereby optimizing their efficiency. Our solutions enable security analysts to efficiently monitor large amounts of data to identify potential issues without worrying about technical aspects

Solutions adapted to every need:

Thanks to their ease of installation and modularity, our solutions are designed to adapt and grow with your architecture.

Benefits

- Away from noisy business machines
- Grouping of sensitive machines in secure enclosures with restricted access
- Remote control of physical or virtual machines
- Separation of video information flows between classified and unclassified machines
- Products with EAL4+, NIAP, TEMPEST safety standards and criteria
- Limitation of access to keyboard/mouse/video streams only to prevent any risk of data theft via USB device

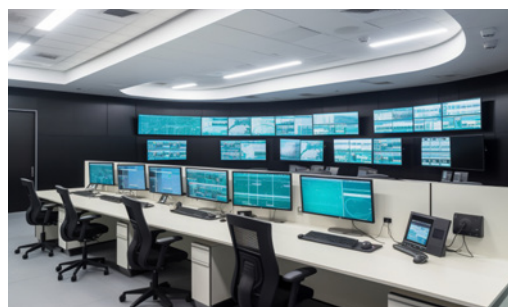
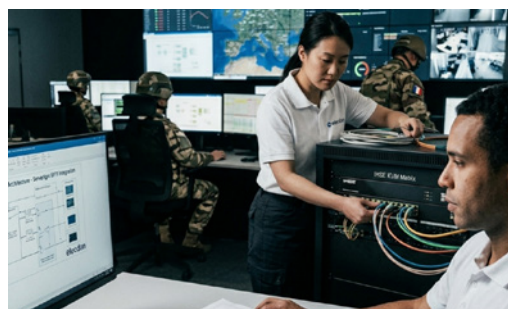
Solutions and services

Solutions:

- Remote access products for your machines on a dedicated copper or optical link
- Network separation
- User access control
- Scalable video wall management
- Support for high 4K video resolutions and 5K curved displays

Services:

- Site study
- Proof of Concept POC
- Custom design
- Integration
- Training
- Maintenance



Eviden is the Atos Group brand focused on cybersecurity products, mission-critical systems and vision AI. A trusted partner to public and private sector organizations, Eviden deploys advanced analytics capabilities and helps ensure the robustness, continuity and resilience of its customers' operations. Leveraging more than 2,200 experts and 720 patents, Eviden helps protect people, data and critical infrastructures worldwide, at the convergence of intelligence, sovereignty and trust.

GEMMA, GLOBAL EMERGENCY MANAGEMENT SYSTEM



Facing the growing number of crises, natural disasters, and increasing call volumes, authorities must rely on coordinated and responsive systems capable of handling multichannel communications and sharing information in real time to ensure effective emergency response.

GEMMA, an Eviden solution, addresses these challenges by covering the entire emergency management cycle. As a multi-agency platform, it enhances coordination between command centers and field teams, integrating call handling, dispatching, and the management of incidents, resources, and victims. GEMMA ensures enhanced situational awareness, flexibility, and business continuity, enabling authorities to deliver the right information to the right people at the right time, ultimately helping save lives.



EVIDEN: ENSURING THE CONTINUITY OF COMMUNICATIONS IN CRITICAL ENVIRONMENTS



Eviden offers MCPTT communication solutions tailored to the critical needs of public safety and tactical operations. Its portfolio includes portable, vehicle-mounted, and fixed systems, equipped with MCPTT servers and applications interoperable with 4G/5G networks, ensuring seamless communication continuity in any environment.

These solutions are built on Eviden's Lifelink Wireless infrastructure, delivering high-speed connectivity for mission-critical operations. Based on the principles of sovereignty, trust, and resilience, they rely on a French and European ecosystem covering the core network, radio access, and subscriber management, with built-in redundancy of critical components.

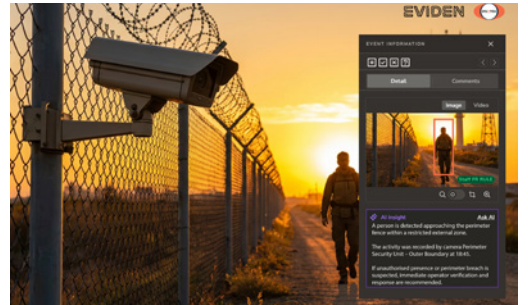
Compliant with 3GPP standards, they feature a customizable field application, interoperability with C2 systems, and a private 4G/5G architecture with low latency. They provide a secure, high-performance, and scalable network capable of carrying voice, data, and video, while integrating innovations from the 3GPP and Open RAN ecosystems.



VISION AI : A NEW DIMENSION IN TERRITORIAL SECURITY



Faced with increasingly complex and unpredictable security situations across territories, public authorities require capabilities that can anticipate, detect, and interpret threats in real time. Eviden's Vision AI solution transforms video monitoring into a true territorial intelligence capability, combining advanced AI and Vision Language Models to analyse and understand scenes with minimal configuration. Powered by Ipsotek's VISuite technology, it delivers immediate contextual awareness, enables operators to query live and recorded video using natural language, and generates relevant, actionable live alerts. Scalable across large, distributed deployments and suited to both urban environments and sensitive sites, VISuite strengthens the decision-making and response capabilities of defence and security stakeholders; supporting more proactive, resilient, and effective protection of critical assets and territories.



IMPACT

Impact is a 100% French software company specializing in the defense and security sectors. Impact's solutions help optimize the potential of the various resources used during an operation, such as telecommunications equipment, sensors, databases, and more.

Based on geographic information systems (GIS), these solutions facilitate critical decision-making by integrating data from multiple sources to provide a shared, real-time view of the tactical situation.

DELTA SUITE



The DELTA SUITE includes the core modules that operators need. Its Windows and Android versions are designed for operators in command and control centers, those on board land or air vehicles, and those on foot.

Basic Features on Windows and Android

- Mapping with a wide range of geographic data formats (import of vector or raster files and connection to map servers), as well as spatial analysis capabilities (slope profile calculation, line-of-sight calculation, geotagging, etc.);
- Location and navigation module;
- Tactical situation tracking module (tracking of friendly forces, wide range of compatible military and civilian communication equipment and sensors);
- Full Motion Video module;
- Instant messaging module.

Specific Activities

Additional modules such as DS MAR-OPS, DS ISR, or DS DRONES can be added to address more specific operational needs such as maritime operations, intelligence, or UxVs and their payloads control.

The DS ENGINE Software Development Kit (SDK) allows developers to add custom features to DELTA SUITE



GÉRARD Jean-Philippe | Responsable Produits et Relation Client
 +33 (0)2 38 72 45 90
 relation.client@sas-impact.fr
 https://sas-impact.com
 1 rue Sainte-Anne | 45000 Orléans | FRANCE



Kontron Modular Computers develops rugged embedded computing boards, platforms and mission systems for critical defense, aerospace and transportation applications. With more than 40 years of European technological expertise, Kontron supports system integrators with secure, modular architectures designed for scalable mission performance and long-term operational continuity. Designed, manufactured and maintained in Europe, Kontron solutions combine cybersecurity foundations, open architectures and lifecycle support services to ensure mission readiness over decades.

SECURE EMBEDDED COMPUTING FOR CRITICAL INFRASTRUCTURE



We develop rugged and secure embedded computing platforms for supervision, command-and-control and critical data processing systems. Our solutions enable the real-time integration, processing and protection of data flows from multiple sensors, field equipment and communication networks in demanding environments.

Through open modular architectures and advanced cybersecurity capabilities, we support integrators in deploying scalable, interoperable and sustainable systems for the protection of critical infrastructure and sensitive territories.

Our expertise:

- Secure high-performance computing platforms
- Open and scalable architectures
- Security-by-design approach
- Real-time processing and secure multi-sensor data fusion
- Long-term availability and obsolescence management
- Designed, manufactured and supported in Europe



CYBERSECURITY & SOVEREIGNTY



We integrate cybersecurity from the earliest design stages of its platforms to ensure system integrity, protection of sensitive data and resilience of critical infrastructures. Our solutions address growing requirements for digital sovereignty and secure connected environments.



LONG-TERM AVAILABILITY & SUPPORT



We support operators and integrators with maintenance, support and obsolescence management services designed to ensure long-term operational continuity for critical systems.



MC2 TECHNOLOGIES

MC2 Technologies, a defense and security contractor, offers C-UAV and RC-IED solutions in the field of electronic warfare.

We work closely with our partners and end customers. We are able to adapt to the needs of the military because we design and manufacture our products in-house.



MICROWAVE CHARACTERIZATION CENTER

SPART



SPART is a portable jammer that neutralizes RF signals used to trigger RCIEDs or any other threat utilizing RF signals. This smart jammer is used for electronic warfare operations and provides advanced protection for operators. It is capable of jamming telecommunications and geolocation systems and of performing spoofing. Compliant with safety standards, it is safe for the operator. Additionally, it is easy to use thanks to its comprehensive digital programming prior to the mission.



NEROD NG



NEROD NG enables continuous jamming of frequency bands, mission programming, and integration of the system with other drone detection systems. It neutralizes communications on non-conventional bands used by next-generation drones; it adapts to threats in real time thanks to its ability to select the mission during operation and reprogram itself in the field. Interoperable, the new generation of NEROD connects to the HADDES and ILIAD detection systems.



BLAST AND ILIAD



BLAST combines a compact design, broad frequency coverage, digital programming, and high operational versatility into a single, user-friendly solution. Developed in France, BLAST addresses one of today's most pressing security challenges: the proliferation of drones and radio-frequency-based threats in both civilian and military environments. By integrating the ILIAD module, BLAST goes beyond jamming: it enables intelligent detection, identification, and neutralization, paving the way for next-generation electronic warfare.



MAJES DFB6



MAJES DFB6 is a multi-mission tactical jammer certified by the UAF (Used by the French Armed Forces) and PERSEUS. It covers an extremely wide spectrum, enabling it to disrupt a broad range of communications. Its architecture incorporates various antenna systems, making it adaptable to a variety of scenarios. The jamming range extends for several kilometers, enabling MAJES DFB6 to protect large areas or neutralize long-range threats. It can be integrated onto land, air, or naval platforms.



Dépit Yves | Directeur Commercial
 +33 (0)3 20 04 55 67
commercial@mc2-technologies.com
www.mc2-technologies.com
 1 rue de l'Harmonie | 59650 Villeneuve-d'Ascq | France



METRAVIB DEFENCE

Metravib Defence provides defense & civil security actors with effective solutions for monitoring, detecting and locating threats. The systems developed by Metravib Defence use the sound waves generated by the firing of arms to detect & accurately identify their location in real time. Thus, Metravib Defence helps to provide improved protection for personnel, permanent installations & mobile platforms in hostile territory. Our Combat Proven solutions are in more than 45 countries and are both certified ISO 9001 and ISO 14001.



© Metravib Defence

PAAD: NEW SMALL AI-DRIVEN ACOUSTIC DRONE DETECTOR



Metravib Defence PAAD is a new drone detector using a passive acoustic sensor powered by Defence Artificial Intelligence (AI). The PAAD can be deployed either standalone or as a key complementary detection technologies that can be coupled or integrated with multi-sensor Counter-UAS (C-UAS) solutions.

The PAAD allows to detect and track (azimuth and elevation) a drone within a radius of several hundred meters (small drones and drone swarms FPV at low altitude and low speed) and enhances small infantry units and vehicle's survivability against the growing threat of Drone Warfare.



© Metravib Defence

PILAR GROUND VERSION



Metravib Defence PILAR GROUND VERSION is an acoustic gunshot detector designed to protect sensitive sites, military bases, checkpoints, embassies and any other areas or buildings. It can also be used to protect a particular event (visit of VIP, meeting of state leaders, etc.). PILAR Ground Version reports in real-time the GPS coordinates of the threat on the cartography.



© Metravib Defence

PILAR V VEHICLE VERSION



Metravib Defence PILAR V is an acoustic sensor that detects and locates the enemy's position. PILAR V is designed for the protection of heavy and light armoured vehicles, as well as police armoured vehicles. It is available as a tetrahedral acoustic array mounted on the vehicle roof. It can also include a display indicating the shot origin and identification. It allows to improve crew & vehicle survivability and enhance situational awareness.



© Metravib Defence



MUSTHANE

Musthane is a French company specialized in the design and manufacturing of flexible composites made from rubber-coated reinforced textiles. Our solutions enhance the survivability and mobility of operations and vehicles in marine, land, and air environments.

We control the entire supply chain, from raw material formulation and manufacturing to final product delivery, ensuring process control, traceability, quality, and reliable lead times.

In the defense sector, our expertise is structured around two complementary pillars:

Design to Flexibility® - Solutions based on flexible and resilient structures: flexible tanks, inflatable jacks, pneumatic pipe plugs, lifting bags.

Design to Mobility® - Equipment designed for rapid deployment operations: helicopter landing mats, forward area refueling systems, temporary access roads.

MARITIME SECURITY BARRIER



Mustmove® Floating Security Barriers (MSB) provide an innovative solution to secure and protect sensitive areas such as ports, maritime infrastructures, or restricted zones by preventing and discouraging intrusions.

These barriers are fully customizable and designed as made-to-measure solutions to adapt to the specific constraints of each site, including area configuration, required security level, and environmental conditions.

A wide range of options and complementary equipment can be integrated, including intrusion alarm systems, navigation or warning beacons, anti-swimmer or anti-drone nets, anchor plates, access gates, colored floats, and specific connection or assembly systems. This modularity enables the design of a maritime security solution perfectly adapted to the customer's operational needs.



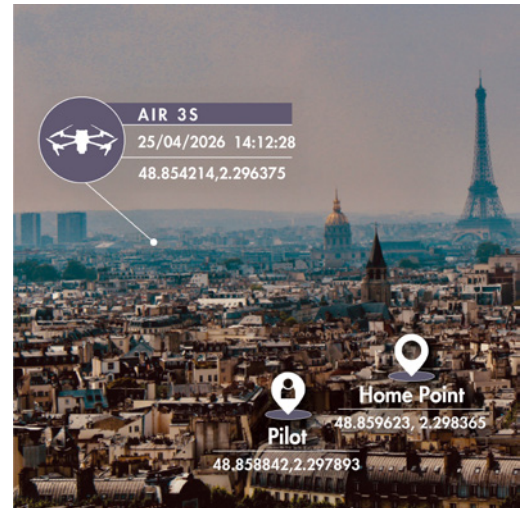
NUANCES TECHNOLOGIES

Expert in wireless communications control since 1991, Nuances Technologies designs, manufactures and integrates advanced solutions dedicated to armed forces and homeland security forces. These tactical systems are intended to control, simulate, detect, intercept, jam, block, locate or secure any type of wireless communication.

DETECTION, IDENTIFICATION AND CLASSIFICATION OF DRONES



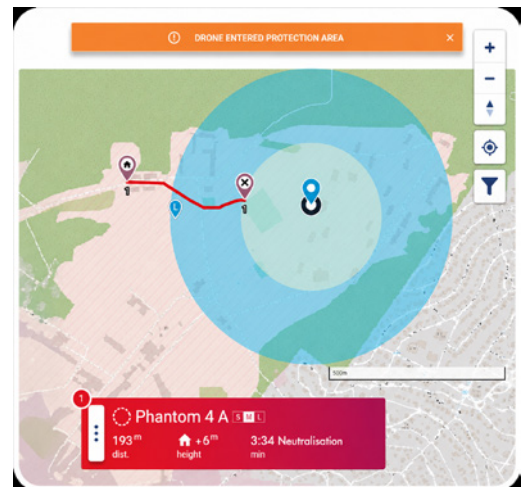
Our detection solution combines multiple sensor technologies to identify threats at long range with a customizable alert perimeter. Advanced data processing minimizes false alarms and instantly notifies operators when one or more drones are detected. The system simultaneously locates drones, pilots, and take-off points with GPS-level precision. Real-time mapping displays each drone's position, trajectory, altitude, speed, and camera orientation. The solution automatically identifies and classifies each detected threat in lists of authorized or unauthorized drones.



AUTOMATIC NEUTRALIZATION OF DRONES



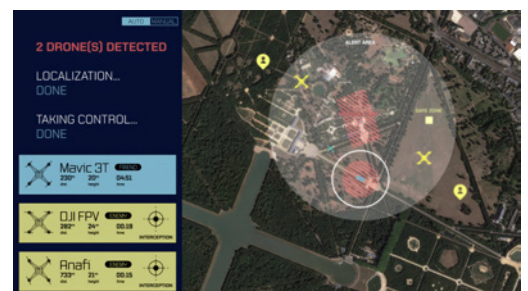
Nuances Technologies provides both reactive and programmable jamming solutions as well as advanced interception systems. As soon as a threat is detected, the operator can activate one or several effectors to block it, either automatically or manually. A takeover component makes it possible to intercept one or more targeted threats, allowing them to be controlled and landed in a secured area. The solution can integrate various options such as direction finding systems, optronic systems, or radars, in order to deliver maximum performance and precision.



SENSORS FUSION



Othelo® C2 system collects data from various systems and multiple sites through the integration of heterogeneous sensors. This information is then merged into a single interface and a centralized database. The system provides supervision of all components, whether fixed or mobile. The map interface displays the real-time position of all systems, operators and detected devices. Othelo® also enables the control of all key functions: detection, classification, visualization, neutralization, and interception.



Sales
+33 (0)1 80 06 80 70
info@nuances.fr
www.nuances.fr
92 avenue de Wagram | 75017 Paris | France



PROENGIN

Proengin goes beyond the role of a detector manufacturer by delivering fully integrated supervision and command solutions designed to secure public spaces and critical infrastructures against external and internal CBRN risks. Built on a modular architecture, Proengin systems support multi-layer deployments with high connectivity, hardened cybersecurity, and seamless integration with existing systems. Through unified CBRN dashboards, real-time data aggregation, and operational mapping, operators benefit from a comprehensive operational picture and enhanced situational awareness. These solutions support multi-site threat management, from local operations to strategic supervision centers, enabling effective coordination and rapid response in complex environments.

LOCAL OPERATIONAL DETECTION



At the operational level, Proengin solutions integrate detection capabilities across drones, robotic platforms, vehicles, and infrastructure systems to support remote operations in dynamic environments. These deployable solutions combine Proengin technology with third-party technologies, enabling real-time data transmission, remote monitoring, and advanced cartography. All operational information is aggregated and transmitted directly to operators, enhancing situational awareness and supporting immediate decision-making. This approach strengthens public space protection, continuous area monitoring, and accurate field assessment while limiting human exposure in high-risk environments.



CENTRALIZED CBRN SUPERVISION



At the central level, systems are structured around CBRN hubs that provide multi-level decision support and coordination. These solutions are adapted to a wide range of configurations, from fixed installations to mobile patrols and single-room protection. Through local deployment and functional autonomy, Proengin sustains continuous protection even in degraded communication environments. Field centers and local supervision sites receive real-time detection data and sensor information, enabling rapid decision-making through dedicated dashboards on laptops or integrated "Threats Management Appliances". This architecture supports fast threat management operations, improving operator safety in the field.



GLOBAL CBRN SUPERVISION



At the highest level, the Proengin SHIELD global dashboard provides advanced decision support across the CBRN spectrum by aggregating Proengin chemical and biological detection with third-party sensors. Fully interoperable with existing systems, including building management systems, it connects multiple subsystems across local supervision sites, buildings, vehicles, and sensor networks. Operators access a single interface providing a complete operational picture with real-time mapping, localization, and detailed threat information. This global visibility enables strategic supervision and coordinated management across multiple sites, sustaining consistent situational awareness beyond geographical constraints.



Proengin

Jérôme Le Bris | Director Sales Europe
 +33 (0)6 04 67 82 44
 jerome.lebris@proengin.com
 www.proengin.com
 1 rue de l'industrie 78210 | 78210 Saintt Cyr L'Ecole | France



VIRTUALBROWSER

VirtualBrowser is a French cybersecurity software publisher that develops an innovative remote and isolated web browsing solution through protocol break. This solution secures employees' web browsing while freeing them from numerous constraints and restrictions. Used by more than 150,000 users across over 100 clients, VirtualBrowser helps large corporations such as Thales, Naval Group, Ariane Group, Bouygues Telecom, Dassault Aviation, as well as public organizations such as the Council of the European Union, the National Council of Monaco, the CNIL, and the Office of the Prime Minister, to protect themselves against cyber threats and address the challenges of modern cybersecurity. VirtualBrowser is the first web browsing security solution to be certified by ANSSI.

THE WEB BROWSER BECOMES YOUR COMPANY'S FIRST LINE OF DEFENSE



VirtualBrowser addresses two major cybersecurity challenges:

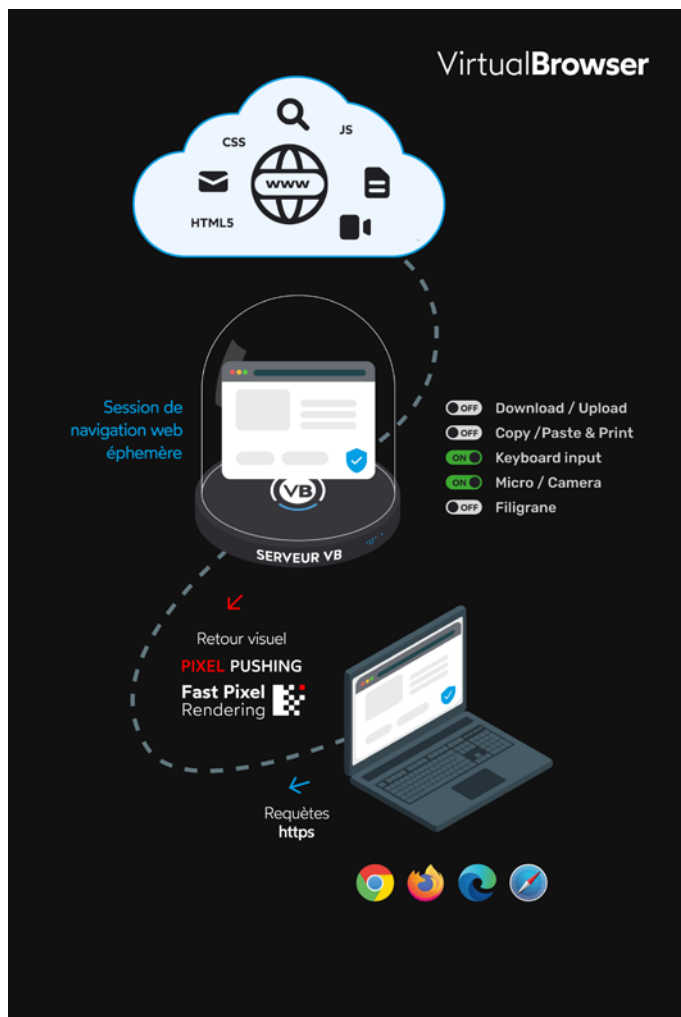
1/ Protection of sensitive and general user workstations

VirtualBrowser implements a protocol break recommended by ANSSI: the user is never in direct contact with the Web. Only a video stream passes between the isolated environment and the user's browser. In practice, no code is executed on the user's workstation, which remains untouchable from the Internet. All Internet threats such as phishing, ransomware, zero-day vulnerability exploitation, and fingerprinting are therefore contained within the isolated environment.

Browsing remains completely transparent for the user, who continues to use their usual browser without the need for multiple physical workstations.

2/ Securing third-party access to the IS

VirtualBrowser also enables control over access from unmanaged workstations, such as those used by contractors and external third parties, as well as BYOD devices. The solution provides simplified and secure access to the company's internal applications through a simple URL, along with granular permission configuration (read-only, keyboard activation, copy/paste restrictions, download limitations, etc.). The level of permissions is thus tailored to the degree of trust granted.



The solution delivers three main benefits:

a. A significant improvement in security level: by fully isolating browsing through a protocol break, VirtualBrowser prevents any attack from reaching the user's workstation or the IS. No web code is executed locally.

b. Time savings from deployment to maintenance: the solution stands out for its ease of implementation. Simplified deployment builds on existing infrastructure: from a few minutes in SaaS to a few hours on-premise. No agent or plugin needs to be installed on user workstations. No change management required for teams.

c. A reduction in IT costs: VirtualBrowser can replace certain VDI use cases, which are often costly and oversized. The solution can therefore significantly reduce the cost of browser protection.



VirtualBrowser

Buffard Delphine | Head of communication
+33 (0)6 75 86 57 49
d.buffard@virtualbrowser.com
www.virtualbrowser.com
18 rue de Miromesnil | 75008 Paris | France

Rozeaux Julien | Head of Sales
+33 (0)7 77 82 40 98
j.rozeaux@virtualbrowser.com
www.virtualbrowser.com
18 rue de Miromesnil | 75008 Paris | France



VITEC

VITEC, a major player in Intelligence, Surveillance, and Reconnaissance (ISR), provides proven solutions for video acquisition, distribution, visualization and archiving for military and government environments. Faced with critical transmission challenges in the field, including limited satellite link bandwidth, we develop advanced interoperable video compression technologies. Our solutions ensure optimal image quality while significantly reducing operational costs (OPEX). Compatible with NATO STANAG 4609, they integrate metadata, high-definition visualization and secure sharing, including with allies and partners, for rapid exploitation and effective strategic decision-making. VITEC solutions deliver easy-to-use technology that ensures high-quality, low-latency HD video, capturing live and recorded events for seamless distribution in a multitude of formats anytime, anywhere, to any device.

CHANNELLINK



Channellink acts as a central hub where IP channels can be received and retransmitted live across any IP network, offering low latency and reliable delivery of video contents to remote sites via Internet or constrained networks. It is especially well suited for stream management, routing, re-broadcasting or IPTV stream reflection over WAN/the Internet. It converts input streams into a new streaming protocol (i.e.: UDP TS multicast or unicast, RTP/RTSP, RTMP/RTMPS, Zixi™ or an SRT-protected stream). Designed to meet stringent security criteria, it is suited for secure government and military Full-Motion Video (FMV) applications.



DIAMOND-H



MGW Diamond-H is a flexible and powerful 4K HDMI portable encoder for live video dissemination or site-to-site streaming within defense & security markets. It features an impressive size, weight and power (SWaP) characteristics. It provides best-in-class video quality over industry standard video/audio connectivity. MGW Diamond-H supports 4K HDR video streams and offers up to 4 low latency streaming outputs from 2x HDMI or 1x SDI inputs. MGW Diamond-H can be used to distribute the encoded output of a source across a network, whilst simultaneously being viewed locally on a user's screen (e.g.: in a control room) using HDMI loop-through. Inbuilt Power over Ethernet (PoE+) makes it easy to integrate.



VSN SERIES



A powerful and scalable video wall solution. Supporting projects with video wall requirements of any scale, VSN Video Wall Controllers are designed for use in a variety of environments ranging from stadiums and venues to command & control rooms and defense installations. The VSN series provides solutions for discrete and demanding video wall requirements, with the range featuring both compact desktop, and high-density, rack-mounted chassis options.



MGW DIAMOND TOUGH



The MGW Diamond TOUGH is a fanless quad-channel HEVC/H.264 encoder in a military-grade enclosure for ISR and situational awareness. It supports 4 SDI inputs, 8 outputs, AES encryption, STANAG metadata, and optional recording, available as an appliance or electronic card.



Fabrice Corbin | Business Development Manager
 +33 (0)7 75 74 23 41
 fabrice.corbin@vitec.com
 www.vitec.com
 99 Rue Pierre Sénard | 92320 Chatillon | France



WARYME

WaryMe is a software and cloud services publisher specializing in mobile solutions for people safety, crisis management and mission control. The solution integrates advanced features around emergency alert, reporting, real time tracking, security plans and crisis management, mobilization and mass notification.

WaryMe has more than 350 customers, including sensitive sites (Seveso, nuclear), public transport authorities, events (festivals), companies, local authorities and establishments open to the public.

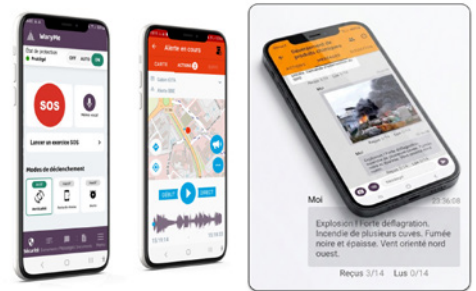
Designed and developed in France, the solution is hosted in the cloud (SaaS) for rapid and flexible deployment. It can be made autonomous and deployed on all types of terrain, via an Edge computing installation and private 4G network.

THE WARYME MOBILE APPLICATION



Involving frontline staff in the overall security framework enables faster understanding, decision-making and response in the event of a major incident. Real-time information sharing (distress alerts with location data, audio or video recordings, or reports) allows the situation to be assessed and appropriate measures to be taken. Crisis scenarios are modelled in the form of collaborative action plans. Safety instructions and emergency procedures are disseminated immediately.

- SOS alert (voluntary, lone worker protection)
- Reporting
- Instant messaging
- Video conferencing
- Real-time GPS tracking
- Collaborative action plans
- Logbook



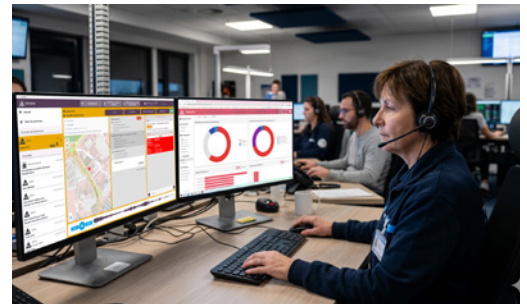
DISPATCHING AND CENTRALISED INCIDENT MANAGEMENT



The control centre software enables centralised management of WaryMe security incidents on a large screen, whether from a security PC, an Urban Supervision Centre or a crisis response unit. This tool allows teams in the field to be monitored and directed in real time, ensuring optimal coordination during operations.

The solution is simple and intuitive. Its modern interface incorporates best practices in terms of user experience. It is regularly praised for its ease of use, ensuring widespread adoption.

To unify command and increase the overall responsiveness of the client's security ecosystem, WaryMe APIs (application programming interfaces) enable integration with most comprehensive security hypervisors.



CLOUD OR ON-PREMISES HOSTING



The WaryMe solution offers complete flexibility in terms of hosting to suit all deployment and security requirements. Three distinct options are available. Shared SaaS hosting ensures quick and easy deployment for an immediate start.

Where security and performance requirements dictate, WaryMe can be deployed on a dedicated cloud infrastructure, offering complete isolation and guaranteed resources.

For the most critical scenarios or highly constrained environments, on-premises installation is possible directly within the customer's IT system. This option allows operation on a private infrastructure that is completely disconnected from the internet, with the possibility of operating within a private 4G bubble to ensure autonomy and resilience in the field.



Berger Boris | CEO
+33 (0)6 37 84 37 58
boris.berger@waryme.com
www.waryme.com
1137A Avenue des champs blancs | 35510 CESSON SEVIGNE | France



*Quand l'excellence
devient **VITALE***



**Groupement des industries
françaises de défense et de sécurité
terrestres et aéroterrestres**

39 rue Mstislav Rostropovitch
75017 Paris
+33 (0)1 44 14 58 20
contact@gicat.fr

gicat.com