



 SECURITY

HELPED
*Humanitary Emergency
Logistic Project
& Eco Development*

The CAPABILITIES



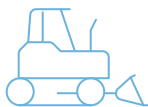
MISSION PREPARATION & ANTICIPATION

Effective mission preparation relies on mastering a wide range of parameters and analysing available data, while ensuring that information systems are protected against cyber threats. Field operations also depend on robust training programmes and realistic simulation exercises. This requires highly trained, versatile personnel capable of deploying aid and equipment, as well as providing in-service support (ISS). Areas: analysis, anticipation, training and exercises, humanitarian and aid organisations, etc.



INITIAL RESPONSE

As soon as a major incident occurs, an initial response must be launched by a specialised team to address first-degree emergency needs. When access by road is not feasible, aircraft are vital in order to reach response areas. Equipment must be multi-functional, robust and designed for rapid deployment and immediate use by small, agile teams working with lightweight, connected equipment offering maximum autonomy. The uncertainty inherent in emergency interventions requires anticipation through flexible, easy-to-use solutions and equipment. Areas: threat detection, reconnaissance and identification, emergency medical equipment, light land, air and maritime intervention vehicles, mobile communications and robotics, etc.



DEPLOYMENT & MOBILITY

Intervention teams must have access to rapid deployment and logistical transport capabilities to reach remote and potentially hard-to-access emergency response theatres as quickly as possible. This mission may be carried out using cargo aircraft, next-generation airships, transport helicopters or even logistical UASs. Deployment also requires loading/unloading logistical capabilities, autonomous energy sources and terrain preparation solutions, ranging from basic ground stabilisation to trafficability, earthwork and crossing. Areas: logistics, transport, terrain preparation, mine clearance, materials handling, etc.



CONTROL CENTRE, NETWORKS, ENERGY, STORAGE & MAINTENANCE

Communications, fluids and energy networks form integrated, mobile systems and subsystems that must be resilient and reliable. Typically containerised or containerisable, these systems host multiple functions, including ensuring wireless communications between response teams and operators, supplying electrical power and water, and enabling storage and fleet and personnel management. A crisis management command post is at the centre of the organisation. Areas: communications, management and distribution, alternative energy sources, storage, fluids, maintenance, etc.



SHELTERS & PERSONNEL SUPPORT

During human-induced, technological or natural disasters, environmental conditions can be extreme, requiring equipment that is robust, resource-efficient (in terms of water, energy, etc.), and easy to deploy and use. France has strong industrial capabilities in the production of high-quality tents and shelters which, with appropriate adaptations, can fulfil a wide range of functions, including those required for field hospitals or CBRN-E decontamination airlocks. Areas: shelters, tents, hygiene, personnel support, waste treatment, air-conditioning, laundry, etc.



► SUBSISTENCE, WATER TREATMENT AND SANITATION

Meeting the immediate need for drinking water and food is a top priority in any emergency response. Once the acute phase has passed, the gradual restoration of conventional catering services requires a supply of varied food products that can be prepared on site. As with all deployed resources, subsistence and catering equipment must be autonomous, robust and easy to use. Areas: drinking water supply, food / rations, field kitchens, refrigeration, etc.



► MEDICAL SUPPORT

French manufacturers offer proven capabilities to integrate and package medical, surgical and care units within shelters and tents that can be deployed to emergency response theatres. These solutions have already demonstrated their effectiveness in humanitarian operations and in providing assistance to populations affected by disasters or major incidents. Areas: field hospitals, ambulances, medical care, pharmacy.



► HUMAN REMAINS

The bodies or human remains of individuals who have died as a result of conflict or natural disasters must be recovered from operational areas or disaster sites in accordance with established protocols enabling the identification of victims, compliance with strict sanitary standards to prevent the spread of pathogens, and the return of remains to their families. Areas: transport, identification, treatment, funeral services, etc.



► SAFETY AND SECURITY

Humanitarian crises and disasters are often accompanied by disruptions to public services, particularly in countries where governance structures are weak. During such crises, the inability of public authorities to meet the population's basic needs or to maintain public order can lead to varying degrees of instability and create conditions conducive to predatory behaviour by criminal groups. As a result, any humanitarian emergency response must systematically include a security component capable of ensuring the safety of deployed response teams, while also supporting local forces responsible for maintaining security.













► RECONSTRUCTION & RECOVERY

Supporting affected populations and restoring their environment requires the rapid detection, protection and, where necessary, decontamination or depollution of impacted areas. Response units face complex hazards that can affect both mobile rescue and search equipment and the teams themselves. Areas: reconstruction of infrastructure, roads, bridges, and digital and communications infrastructure, etc.

INDEX



COMPANIES	Mission Preparation & Anticipation	Initial Response	Deployment & Mobility	Control Centre, Networks, Energy, Storage & Maintenance	Shelters & Personnel Support	Subsistence, Water Treatment and Sanitation	Medical Support	Human Remains	Safety and Security	Reconstruction & Recovery
ARTEM INFORMATION & STRATEGIES p.7	●									
BACHMANN RDS p.8					●		●			
CEGELEC DÉFENSE p.9		●			●		●			
CNIM SYSTÈMES INDUSTRIELS p.10			●							
DAHER p.11		●	●		●					
DELAIR p.12	●	●							●	●
EASYCUBE p.15			●	●	●	●	●	●	●	●
FACTEM p.16		●		●						
IMPACT p.17				●						
ISYMAP p.18		●								
MANITOU BF p.19		●	●							●
MBS INDUSTRY p.20	●	●	●				●		●	
MONKILOWATT p.21			●	●	●					
MUSTHANE p.22			●			●				
PANOPTÈS p.23	●	●	●	●			●	●	●	
PROENGIN p.24		●	●						●	
PRONAL p.25			●	●	●	●				
RENAULT TRUCKS p.26		●					●		●	
SN ZHENDRE p.27				●	●		●	●		
THALES p.28								●	●	
TITAN DEFENSE p.29			●							
TOUTENKAMION GROUP p.30		●					●			●
TYNDALL FX p.31		●								
UNAC p.32		●								

COMPANIES	 Mission Preparation & Anticipation	 Initial Response	 Deployment & Mobility	 Control Centre, Networks, Energy, Storage & Maintenance	 Shelters & Personnel Support	 Subsistence, Water Treatment and Sanitation	 Medical Support	 Human Remains	 Safety and Security	 Reconstruction & Recovery
UTILIS p.33		●	●		●					
WARYME p.34		●						●		
WILLIAMSON ELECTRONIQUE p.35				●						

MEMBERSHIP
directory

ARTEM INFORMATION & STRATEGIES

For more than 20 years, ARTEM Information & Strategies has supported companies, public institutions and critical infrastructure operators in risk analysis and crisis preparedness. Our work covers industrial, cyber, geopolitical, security and reputational risks, as well as business continuity, crisis management structures and crisis exercises. Our approach combines subject-matter expertise with operational experience and lessons learned in order to strengthen organisational resilience and decision-making capabilities.



CRISIS MANAGEMENT POLITICS



Since 2005, ARTEM Information & Strategies has supported public and private organisations in anticipating risks, preparing for critical situations and strengthening their resilience. We provide risk analysis, crisis management and crisis communication support, business continuity and crisis management procedures (natural disasters, fraud, sabotage, foreign interference, cyber incidents, etc.), tailored to each client's structure, activities and challenges. All our work is guided by a single principle: operational effectiveness.

DIMENSION	TABLETOP	SIMULATION
Purpose	Familiarisation and improvement	Operational validation
Positioning	Analysis and structuring	Action and reaction
Pace	Structured, encouraging reflection	Dynamic, under pressure
Scenario	Distinct crisis situations or phases	Continuous evolving scenario
Pressure Level	Moderate	High
Focus	Procedures, roles, organisation	Decision-making, task allocation, coordination, communication
Expected Outcome	Improvement actions and action plan	Operational validation and lessons learned

TABLETOP EXERCISE



Tabletop exercises enable decision-makers and experts to collectively explore a crisis scenario that is designed to help participants understand and apply procedures, clarify roles and responsibilities, identify organisational gaps, and generate practical improvement actions.

A tabletop exercise is often the first step in a broader crisis preparedness programme, but it can also be conducted as a complement to realistic crisis simulations. Tabletop exercises are also an effective tool for preparing complex projects, enabling organisations to anticipate potential risks, disruptions and stakeholder challenges before implementation.



CRISIS SIMULATION



Crisis simulations recreate the conditions of a real-world critical event through dynamic scenarios, continuous interactions and realistic operational pressure. Participants are required to make decisions under time constraints and address major operational, human and reputational challenges.

The objective is to observe how the organisation actually functions under stress, assess decision-making processes, test the effectiveness of existing procedures and validate the organisation's ability to coordinate, communicate and respond effectively during a crisis.



ANALYSIS AND STUDIES / PROSPECTIVE



A key differentiator of our firm is the completion of more than 120 strategic studies, sector analyses and foresight projects for institutional and industrial clients. Natural disasters, CBRN risks, industrial accidents, terrorist threats, techno-operational challenges, hybrid crises, foreign interference, cyber threats, cyber warfare and even nuclear strike scenarios: this analytical expertise enables us to build exercises and simulations on realistic, well-documented assumptions directly inspired by the challenges our clients may face.



Cansell Patrick | CEO
 +33 (0)6 75 65 59 86
contact@artem-is.fr
www.artem-is.fr
 13ter-15 rue Auguste Gervais | 92130 Issy les Moulineaux | FRANCE



BACHMANN RDS

Specialised in inflatable and metal-textile structures, BACHMANN RDS is a global leader in rapid deployment systems, offering modular and robust solutions tailored to the most demanding environments. The company manages every stage of the development process for its solutions, from design to commissioning, in order to meet its clients' operational needs precisely.

Its structures are designed to protect personnel and sensitive equipment in challenging environments, serving the following sectors: Defence & Security, Aerospace, industrial applications, humanitarian missions and NGOs. Its expertise covers complete critical infrastructure, ranging from command posts and technical hangars to turnkey camps and field hospitals, and also includes specialised solutions for camouflage, CBRN protection and anti-drone measures.

FAST DEPLOYABLE TENT - FDT



Designed for critical environments, the FDT offers a reliable solution for emergency operations and crisis management.

- Straight walls: optimised interior volume
- 100% inflatable structure: rapid deployment without tools
- Modular ends: quick adaptation to on-site conditions
- Connection flap: watertight and weather-resistant
- Interconnectable design: camp creation



DOUBLE WALL SHELTER - DWS



Designed for medium- and long-term deployments, the DWS tent combines robustness and comfort in demanding environments.

- Drop-stitch technology: ultra-reinforced walls
- Enhanced strength and durability
- Minimal maintenance: long-lasting performance
- High thermal and acoustic insulation
- Reduced energy costs



FIELD HOSPITAL



Designed for emergency situations, our range of field hospitals provides rapid and reliable medical capacity.

- Turnkey solution: immediate response to health crises
- Rapid deployment within days thanks to inflatable structures
- Operational continuity: reliable performance in prolonged situations
- Interconnectable systems: scalable to meet your needs
- Full modularity: triage, hospitalisation, logistics
- Proven robustness: resistance to extreme conditions



CBRN



Designed for CBRN situations, our decontamination solutions ensure a rapid, self-sufficient and reliable response in the field.

- Immediate deployment: operational within minutes
- Fully self-contained: integrated clean and waste water management
- Proven robustness: suitable for use in extreme conditions
- Integrated ORCHIDS protocol: optimal and safe decontamination
- Total modularity: triage, individual or mass decontamination



CEGELEC DÉFENSE

Your partner for Defense & Security

50 years of service dedicated to the protection of strategic infrastructure and operational support.

A European leader in technology services, Cegelec Défense leverages its expertise to support major fixed and mobile hardened infrastructure projects for Defense and Security.

Our domains of expertise: Protection & Security • Infrastructures & Networks • Mobile & Deployable Solutions • Mechatronics • Information Systems • Cybersecurity • Electromagnetic Control.

Specialists in Kinetic, EMP, CBRN, TEMPEST & CYBER protection.

MOBILE MEDICAL UNIT



Solution overview

The COVID crisis highlighted the need for rapidly deployable medical solutions to reinforce and support healthcare facilities without mobilizing existing infrastructure :

- on the care side: immediate increase in bed capacity, deployment of isolation units for contagious patients;
- on the administrative side: patient reception and triage.

These advanced medical units enable emergency services (SAMU-equivalent) to ensure rapid deployment and projection to disaster sites, public reception during health campaigns (screening, vaccination), as well as additional bed capacity to support existing hospitals.



Strenghts

100% French solution, multi-purpose, rapid deployment in intra and extra-hospital environments, operational within 1 hour with 4 operators, highly customizable, pre-equipped with resuscitation and emergency equipment, and offering full cost control for long-term financial visibility.

Technical description

- Base unit includes: 20ft ISO shelter, transport/storage configuration, transportable by air, land, and sea, optional truck with hydraulic arm, skid and flatbed, training for deployment and maintenance.
- Customization options (9) : Heating/air conditioning, external lighting, entry/exit airlock, generator set, Wi-Fi network, 3G/4G antenna, oxygen distribution system, additional storage solutions.
- Maintenance & training services : Maintenance levels 1 to 4, deployment procedures and technician training.

MOBILE CBRN DECONTAMINATION UNIT



Solution overview

Aluminum structure, self-contained and rapidly deployable, packaged in a transportable container, capable of processing up to 80 casualties per hour using 8 CBRN decontamination lanes (including 2 for non-ambulatory patients).

Designed for major crisis situations: mass casualties, industrial accidents, CBRN attacks, hospital capacity reinforcement, rapid deployment in contaminated areas, with optimized transport via a single Ampliroll truck.



Technical description

- Pre-configuration: 6 lanes for ambulatory casualties + 2 for stretcher cases, integrated showers and heaters, virucidal surfaces, forced hot-air ventilation, initial water autonomy, collection and storage of effluents (sealed flexible tanks), NRC protective equipment and decontamination agents, management and storage of contaminated clothing.
- Pre-equipment: indoor and outdoor lighting, marking and operational signage kits, connection to water and power infrastructure.



CNIM SYSTÈMES INDUSTRIELS

As a major partner in the defense and security industry, CNIM Systèmes Industriels has been supporting armed forces since 1856.

Our solutions aims at strengthening military operational capabilities, mainly for combat engineering units, in terms of: gap crossing, route clearance, terrain preparation, mobility & counter-mobility.

CNIM Systèmes Industriels : support & protect the mobility, secure the avance



PFM | MOTORIZED FLOATING BRIDGE



The Motorised Floating Bridge (PFM) is designed to allow military vehicles to cross waterways (lakes, rivers). It is a unique solution due to its speed of deployment and ability to meet multiple challenges in the theatre of operations.

In order to meet the different operating concepts, two main configurations are available: a fixed bridge (continuous crossing) or a ferry (discontinuous crossing), plus a range of equipment options with up to MLC 90T/100W capability.

The PFM has been used by the French Army for nearly 30 years and is also the preferred crossing solution used by the armed forces of several other countries (Italy, Switzerland, Malaysia): more than 5,500 metres of bridge length are currently in service worldwide. The next-generation PFM designed for crossing by the heaviest vehicles enters service with the Polish armed forces. It will also be supplied to the French Army: indeed, in late 2025 the French Defence Procurement Agency (DGA) awarded the SYFRALL contract.

The PFM stands out for its ability to carry the heaviest vehicles used by the armed forces, its rapid deployment, manoeuvrability, reduced logistics and personnel footprint and, last but not least, by its versatility in both military and civilian applications (natural disasters).



ROCUS | ROUTE CLEARANCE UNMANNED SYSTEM



The ROCUS is an unmanned ground-based robotic system designed to clear, secure and cross mined and trapped routes in the theatre of operations.

Developed by CNIM Systèmes Industriels based on the THeMIS platform from Milrem Robotics, the ROCUS, combat proven, has been deployed in Ukraine since 2023.

Able to operate in hostile terrain, combining endurance and robustness, ROCUS inspects, confirms and neutralises the threat to ensure the safety of soldiers and the advance of convoys. Remote-operated out of view, it avoids direct exposure of military personnel.

The ROCUS is a high-mobility tracked vehicle that exerts limited pressure on the ground. It can operate in all environments and accompany troops in the most remote terrain.

The ROCUS is also available in a vehicle-mounted configuration, notably on the Arquus Drailer platform, which has been demonstrated.



DAHER

Aircraft manufacturer, industrialist, industrial service provider and logistician, Daher today has 14,500 employees for a turnover of 1.9 billion euros in 2025. With its family ownership, Daher has been focused on innovation since its creation in 1863. With locations in around seventeen countries in Europe, North America and Asia, Daher designs and develops value-added solutions for its aeronautical and industrial customers and partners, serving both civil and defense markets.



STRATEGIC DEFENSE AIR TRANSPORT, SECURED WORLDWIDE



Daher delivers strategic air transport solutions dedicated to defense operations, meeting the highest standards of security, reliability, and regulatory compliance.

We provide chartering of all types of aircraft and handle the transport of all kinds of equipment, including all classes of hazardous goods and temperature-controlled cargo.

Supported by a specialized team available 24/7, we manage loading planning in close coordination with loadmasters and airports, loading and unloading assistance, traffic rights management, customs formalities, and cargo security.

Our services also include secured warehousing, warehouse management, and end-to-end handling operations, ensuring full control and flawless execution of defense logistics worldwide.



OPERATIONAL SHELTERS FOR FORCE ACCOMMODATION AND SUPPORT



Daher designs and integrates mobile, robust and secure operational shelters, intended to provide accommodation, rest and personnel support functions in operational environments. Serving as deployable living modules, they improve the conditions under which teams operate when deployed in demanding contexts.

Based on a 20-foot ISO steel shelter (ISO 668) with CSC certification, these systems are designed for operation in harsh environments, in compliance with STANAG 4370, with an operating temperature range from -32°C to +50°C. Their design ensures robustness, protection and durability across operational theatres.

The internal layout distinguishes a personnel-dedicated area from a technical area, providing a secure and comfortable space for rest, organisation and support activities. The shelters integrate autonomous power systems, electrical and air-conditioning systems, as well as lighting and safety equipment, contributing to user comfort and safety.

Easily transportable and deployable, compliant with ISO 3874 handling standards, they incorporate palletisation tunnels and a bi-position Ampliroll system (STANAG & DIN), enabling rapid deployment. Their modular design allows layouts and equipment to be adapted to the specific needs of force support and operational life.



Marchel Karolina | Business Development Manager
k.marchel@daher.com
www.daher.com
 7 avenue de l'union | 94390 Orly | France

Henriau Emmanuel | Sales Manager
e.henriau@daher.com
www.daher.com
 7 avenue de l'union | 94390 Orly | France



Delair, a French pioneer in UAV technology, has developed 5 generations of professional drones for Intelligence, Surveillance, Target Acquisition, and Reconnaissance (ISTAR) missions. Our portfolio includes fixed-wing, multirotor, ROVs, and loitering munitions, offering robust solutions. Trusted worldwide Delair combines innovation and reliability to support defense and critical missions with cutting-edge.

DRAKO : UNIVERSAL GROUND CONTROL STATION



DRAKO (Drone Remote Access Command & Control for Operations), provides a unified command-and-control interface for mission planning and anticipation. Compatible with STANAG 4609 and major European drone manufacturers, it enables multiple drone types to be controlled from one platform. It centralizes field data, flight plans, and tactical information to support rapid decision-making. Its tools assess risks, adapt routes, and anticipate events in real time. Already used by French, Ukrainian, and other European armed forces, DRAKO is a key asset in modern operations.



DX08 - MULTIROTOR PLATFORM FOR ISR MISSION



DX08 – 3,2 kg UAV | up to 30 min endurance | up to 2 km Communication range | up to 1,5 kg Payload

The DX08 is a versatile quadcopter designed for surveillance, observation, and rapid situational awareness missions. Equipped with day and night cameras, it provides continuous monitoring, including in complete darkness, while delivering fast and accurate intelligence and reducing exposure of ground teams. Its endurance enables persistent observation, confirmation of reported information, and real-time monitoring of evolving situations. Its modular design allows rapid payload integration to adapt to tactical needs. Robust and reliable, it operates effectively in demanding environments with unified control through the Delair Drako Universal Ground Station.



DT46 – LONG-ENDURANCE TACTICAL EVTOL UAV FOR ISR/ISTAR MISSIONS



DT46 – 25 kg UAV | + 6h Endurance | 100 km communication range | 5 kg Payload

The DT46 is a convertible UAV with a modular VTOL design for demanding multi-mission operations. It offers +6 hours endurance in fixed-wing mode or +3 hours in VTOL mode, with a range up to 100 km and dual payload capacity of 5 kg. It supports advanced sensors including long-range gimbals, IMINT, LiDAR and RGB payloads. Used by the French Army, French Air and Space Force, and Latvian Armed Forces, the DT46 is suited for surveillance, reconnaissance, artillery coordination, border protection and disaster response. It combines endurance, mobility and sensor versatility for field operations.



DELAIR

DT61 – EXTRA LONG-ENDURANCE TACTICAL UAV FOR ADVANCED ISR/ ISTAR MISSIONS



DT61 – 100 kg MTOW | + 10h endurance | +100 km Communication range | 15 kg payload

The DT61 is a medium UAV designed for ultra-long-range observation and advanced ISR/ISTAR missions, providing persistent wide-area coverage. It can carry multiple sensors including gimbals, IMINT, SIGINT, and SAR/GMTI radar systems. Its fixed-wing VTOL architecture enables runway-independent operations from remote or constrained locations, while its modular design ensures mission flexibility. Deployable by only two operators in less than 30 minutes and transportable in a light utility vehicle such as a pickup truck, the DT61 combines endurance, mobility, and payload versatility for demanding military operations.

DT26 – MEDIUM-ENDURANCE TACTICAL DRONE FOR ISR MISSIONS



DT26 – 16 kg (including payload) | 170+ min endurance | 50 km communication range

The DT26 is a versatile tactical drone designed for close-range surveillance, reconnaissance, and operational support missions. Compact and easy to transport, it can be rapidly deployed from constrained environments to provide immediate situational awareness. It enables monitoring of gatherings, control of sensitive areas, securing movements, and supporting coordination of ground units. Its modular design allows integration of various sensors depending on mission requirements. With strong endurance and ease of use, the DT26 is a reliable solution for operations requiring responsiveness, precision, and mobility.

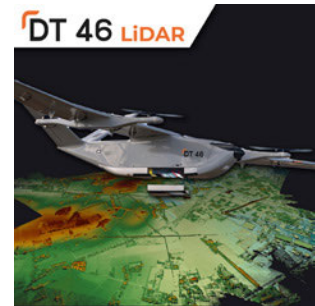


Delair, a French pioneer in UAV technology, has developed 5 generations of professional drones for Intelligence, Surveillance, Target Acquisition, and Reconnaissance (ISTAR) missions. Our portfolio includes fixed-wing, multirotor, ROVs, and loitering munitions, offering robust solutions. Trusted worldwide Delair combines innovation and reliability to support defense and critical missions with cutting-edge.



DT46 LiDAR – 25 kg | 6+ hours endurance | 100 km communication range | Centimeter-level accuracy

The DT46 LiDAR is a long-range drone solution designed for high-precision mapping and 3D terrain modeling. Equipped with a LiDAR sensor and an RGB camera, it rapidly collects reliable data to support mission planning and operational area analysis. Its VTOL architecture enables runway-free deployment from confined spaces. Mobile and easy to transport, it can quickly cover large areas. Robust and secure, it is an ideal tool for topographic surveys and ground reconnaissance missions.



UX11 IR – TACTICAL MAPPING UAV

UX11 IR – 1.6 kg (including payload) | 80+ min endurance | 10 km communication range

The UX11 IR is a fixed-wing drone designed for discreet observation, local surveillance, and rapid reconnaissance missions. Equipped with day/night sensors and infrared capability, it can detect movement, track individuals, and monitor sensitive areas, even in low-light or nighttime conditions. Easy to operate and quickly deployable, it provides an effective solution for route surveillance, perimeter control, and support to law enforcement operations. Its long endurance and wide coverage make it particularly well suited for missions requiring discretion, mobility, and continuous observation.



SEASAM HULLSCAN – INTELLIGENT UNDERWATER DRONE FOR INSPECTION, SURVEILLANCE, AND RECONNAISSANCE

SEASAM HULLSCAN – 10 kg | 4+ hours endurance | 150+ m depth | 2.1 knots

The Seasam Hullscan is a compact underwater drone designed for local observation, rapid inspection, and surveillance missions in submerged environments. Capable of operating autonomously (AUV) or in tethered remote-controlled mode (ROV), it offers great flexibility depending on operational constraints. Intelligent and agile, it features onboard artificial intelligence that enables autonomous navigation, target tracking, obstacle avoidance, and the execution of complex inspections. It is a highly effective solution for underwater reconnaissance. Quickly deployable from a dock, vessel, or coastal area, it helps reduce team exposure in the field.



EASYCUBE

EASYCUBE - DREYER Group

Off-site modular and containerised construction solutions for operational autonomy and resilience.

From design and engineering to on-site coordination and construction, Easycube draws on its expertise in deploying modular buildings and containerised solutions built for complex environments and the most demanding operational requirements, in France and worldwide.

OUR OFFER



OUR EXPERTISE FOR EXTREME ENVIRONMENTS

Custom Engineering & Design

Our in-house engineering team develops technical solutions tailored to the operational, logistical, and environmental requirements of each mission.

Off-site Construction & Rapid Deployment

Our solutions are optimised for multimodal transportation and deployment in the most sensitive or hard-to-reach areas, both in France and internationally. Easycube designs and delivers modular and containerised infrastructure ensuring fast, secure, and controlled implementation across all operational theatres, including in emergency contexts.

Sustainable Commitment & Responsible Performance

Easycube actively promotes local employment and local expertise. Our projects are grounded in a sustainable performance approach, integrating energy optimisation solutions.

1. SECURITY & INFRASTRUCTURE PROTECTION Surveillance posts, secure storage, ATEX-rated modules

2. ENERGY & RESOURCES Power containers, hybrid battery systems, solar-powered solutions, water and waste management & treatment, potabilization water stations

3. BASE CAMP & PERSONNEL SERVICES Solutions for: modular accommodation, sanitation, dining facilities, restaurants, kitchens, cold storage, offices, fitness facilities

4. COMMAND & INFORMATION SYSTEMS Infrastructure enabling secure information and communications management

5. LOGISTICS & OPERATIONAL SUPPORT Infrastructure for equipment and vehicle maintenance, storage, and preparation

6. DEPLOYABLE MEDICAL CAPABILITIES Medical infrastructure and laboratories, operational mortuary management

THE STRENGTH OF AN INDUSTRIAL GROUP

As a member of the DREYER Group, Easycube draws on the synergies, technical expertise, and industrial capabilities of its group entities to deliver a dedicated offering to meet the needs of armed forces and strategic projects worldwide. This structure guarantees our partners the highest standards of quality, reliability, and control in the management of sensitive, high-stakes operational projects.



Adrien TEISSONNIÈRE | Responsable Affaires Publiques
 +33 (0)4 90 03 98 70
 defense@groupe-dreyer.fr
 www.easycube.fr
 411 Rue Marcel Demonque | 84140 Avignon | France



FACTEM

Based in Normandy, FACTEM is a French company, active in both civil and military sectors and particularly in the land field.

FACTEM designs and manufactures quality products for voice transmission in harsh environments.

The company controls all stages from design and development to industrialization, production and product life cycle management.

FACTEM wants to promote and get recognized the quality of its products and know-how, 100% «Made in France».



RSM80 : REMOTE SPEAKER MICROPHONE



The **RSM80** is a two-way remote speaker microphone designed for **communications in harsh environments**.

Its ergonomic design makes it intuitive and easy to use for the operator. FACTEM's expertise in acoustics and its R&D experience guarantee high-performance and robust products.

The **RSM80A** is meant for tactical radios, the **RSM80W** has integrated battery and can be used on smartphones, tablets and computers.

Both versions are already in used in various operation theaters in France and abroad.



C2020 : TACTICAL RADIO HANDSET



Building on its recognized expertise in the manufacturing of radio handsets, FACTEM has designed and manufactures the **C2020** handset.

Thanks to its **enhanced audio quality**, it ensures clear and effective communication under all operating conditions. The double PTT button allows different talk groups.

This equipment has proven its **efficiency, reliability, and robustness** in service with armed forces across all theaters of operation.

Leveraging its strong R&D capabilities, FACTEM is able to tailor the equipment's features to meet specific operational requirements.



SOUND-POWERED TELEPHONE



The sound-powered telephone system enables **wired communication** between multiple users **without any external power source**, over several kilometers and without requiring any infrastructure.

In crisis management situations, this system can be rapidly deployed to ensure the coordination required for effective operational management as quickly as possible.

Widely used in the naval and industrial sectors, FACTEM provides a complete range of equipment and accessories for this system to meet operational requirements.



Diana DINU | Responsable Développement Commercial
+33 (0)7 49 58 23 33
diana.dinu@factem.com
www.factem.com
32 Route de Caen | 14400 BAYEUX | FRANCE



IMPACT

Impact is a 100% French software company specializing in the defense and security sectors. Impact's solutions optimize the potential of various resources used during an operation, such as telecommunications equipment, sensors, databases, and more.

Based on geographic information systems (GIS), these solutions facilitate critical decision-making by integrating data from multiple sources to provide a shared, real-time view of the tactical situation.

DELTA SUITE



DELTA SUITE includes the core modules that operators need. Its Windows and Android versions are designed for operators in command and control (C2) centers, those who are on board ground or air vehicles, and dismounted ones.

Basic Features on Windows and Android

- Mapping with a wide range of geographic data formats (import of vector or raster files and connection to map servers), as well as spatial analysis capabilities (slope profile calculation, line-of-sight calculation, geotagging, etc.);
- Location and navigation module;
- Tactical situation tracking module (tracking of friendly forces, wide range of compatible military and civilian communication equipment and sensors);
- Full Motion Video module;
- Instant messaging module.



GÉRARD Jean-Philippe | Responsable Produits et Relation Client
 +33 (0)2 38 72 45 90
relation.client@sas-impact.fr
<https://sas-impact.com>
 1 rue Sainte-Anne | 45000 Orléans | FRANCE



ISYMAP

ISYmap (Instrumentation Systems for Mapping) develops and markets connected radiological measurement instruments, as well as intelligent robots designed for environments ranging from conventional to highly hazardous, where there are risks to humans and/or access constraints.

ISYmap operates across the nuclear industry, defense, and homeland security sectors.



GLOBAL



The **GLOBAL** is a radiological sensor (dose rate or gamma spectrometry) that is shock-resistant, waterproof, and droppable.

It keeps operators away from risk, thus protecting their health and safety. When deployed in numbers, they constitute a network of sensors that can be quickly deployed to monitor the radiological status and evolution of an area in real time.

Use cases: Emergency response - Investigation of restricted access areas - Temporary beacon in harsh environment - Etc.



FLIGHTER



The **Flighter** is a sensor that allows aerial radiological investigations, indoor and outdoor, to be carried out easily and quickly.

Very lightweight, it is adaptable to any type of drone, even the smallest. It is also fully autonomous and does not require any interfacing with the drone.

Use cases: Radiological mapping in post-accident situations - Investigation of inaccessible areas - Etc.



INSPECTOR



The **Inspector** is an all-terrain, wireless inspection robot equipped with an ultra-high-definition camera and a long-range communication system (up to 10 km).

Optionally, it can be equipped with our lightweight radiological sensor, the Flighter (dose rate/ gamma spectrometry).

Use cases: Visual and radiological investigations - Emergency response - Etc.



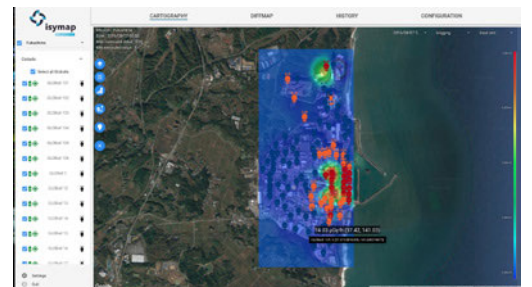
ISYMAP SOFTWARE



ISYmap is a GIS (Geographic Information System) that enables the real-time management of data streams from ISYmap-connected or compatible sensors.

This data is displayed through mapping interfaces. ISYmap allows users to quickly understand a situation and monitor its evolution over time.

Functionalities: Heatmap generation - Path optimization (ALARA) - Differential mapping - Etc.



Aurélien BALLIER | CEO
+33 (0)9 88 28 90 38
contact@isymap.com
www.isymap.com
217 avenue de la Roquette | 30200 Bagnols-sur-Cèze | FRANCE



MANITOU BF

Civil Protection faces complex crises. Manitou offers robust, versatile equipment to protect life and property, ensuring safety in tough conditions. We design a wide range of reliable diesel and electric machines. Our network of 800+ expert dealers keeps your fleet operational, providing training, maintenance, and financing. Manitou has the solution for your rescue operations.



RESTORE ACCESS, REBUILD HOPE



How to **optimize disaster** clearing for a rapid return to normalcy? Manitou offers compact, versatile all-terrain solutions. Move debris with **power and precision**, even in tight spaces, and restore lines of communication. Lift and reach hard-to-access areas easily thanks to the MRT's rotation capability.



SAVE LIVES, REACH THE UNREACHABLE



How to **optimize rescues** in difficult environments to save lives? Manitou combines **aerial lift and versatility** to evacuate people and stabilize structures. Reach victims at **height or in restricted areas** with maximum safety and precision. **Reliable and stable solutions** to assist rescue teams in any situation.



SMOOTHER LOGISTICS FOR AN EFFECTIVE RESPONSE



How to ensure fast **emergency logistics** and smooth distribution in challenging conditions? Manitou optimizes your logistics to speed up aid response. **Load, unload, and handle heavy loads** with ease using our **versatile forklifts and telehandlers and attachments (buckets, winches)**. Robust solutions for a seamless response.



BUILD URGENCY, CREATE SOLUTIONS



How to **quickly build** temporary infrastructure in emergencies? Manitou offers **masted forklifts and telehandlers** with versatile attachments for fast, reliable deployment. **Prepare land, transport large quantities of materials, and position construction elements with precision. Power and versatility** for adaptable construction.



Costantine Georges | Defence business development manager
 +33 (0)6 31 26 14 96
 g.costantine@manitou-group.com
 www.manitou.com/emergency-response-market
 430 rue de l'Aubinière | 44158 Ancenis | France

Gautier Frédérique | Market coordinator
 +33 (0)6 70 44 76 54
 f.gautier@manitou-group.com
 www.manitou.com/emergency-response-market
 430 rue de l'Aubinière | 44158 Ancenis | France



MBS INDUSTRY

French industrial company specialized in **mechatronic solutions for assisting, securing and analyzing human movement in vertical environments**. Rooted in inclusive climbing, para-sport and functional rehabilitation, the company develops technologies designed to modulate effort, secure suspension and support vertical progression. Our technological building blocks (motorized assistance, load balancing, adapted harnesses, spreader bars, biomechanical analysis and intelligent regulation) open up opportunities in sport, healthcare, industry, civil protection and defense. In the defense and security field, we aim to explore applications related to **reconditioning, return to operational fitness, secured vertical training and assistance in constrained environments**, relying on technologies capable of supporting both human movement and the handling of loads, equipment or materials. This approach aims to confront our technologies with the real needs of end users in order to identify the necessary technical, regulatory and operational adaptations.

CHAS - HARNESS



The CHAS and its dedicated spreader bar form a suspension interface designed to **improve the stability, comfort and freedom of movement of people in vertical environments**.

Initially developed for para-climbing with non-ambulatory users, it offers several advantages. Thanks to a specific architecture derived from patent FR2408678, the system distributes **loads across the upper body, clears the user's frontal workspace and enables different suspension postures**: upright, inclined, seated or assisted.

In the defense and security field, this interface could be studied for applications related to secured vertical training, reconditioning, progressive return to operational fitness, assistance in constrained environments, or specific situations requiring the support and stabilization of people. The value of this solution lies in the **increased availability of the arms**, the reduction of interference around the torso, improved postural control and the ability to adapt the suspension to the user's physical capabilities or operational constraints. The spreader bar may also serve as a support for various protective equipment, for example. These opportunities would require technical, regulatory and operational adaptations according to the specific requirements of each use case, which MBS INDUSTRY is able to assess.



CAMI - ROBOTIC VERTICAL ASSISTANCE SYSTEM



CAMI is a **motorized mechatronic system** designed to assist, secure and regulate the vertical movement of a person and/or a load.

Initially developed as a Class I medical device for inclusive climbing, functional rehabilitation and the recovery of autonomy, CAMI is built around a central capability: **modulating apparent weight, assisting effort and dynamically adapting its behavior to the user's movements**, even in extreme cases whether for users with very limited strength, such as people with multiple disabilities or tetraplegia, where control can be managed down to the gram, or for expert users such as elite climbers, with acceleration up to 5G and speeds exceeding 4 m/s.

From a defense and security perspective, CAMI could become a **dual-use technological platform for exploring applications related to secured vertical training, reconditioning, assisted mobility, load handling in constrained environments** and certain specialized vertical assistance situations. It can also offer autonomous and mobile operating capabilities. Its value is not limited to its winch function: it lies in the combination of motorization, sensors, intelligent regulation, movement analysis and human-machine interface. This combination makes it possible to consider scenarios where the objective is to **reduce physical strain, secure progression, repeat technical movements, stabilize a person or assist the precise handling of a load**. For defense and security stakeholders, CAMI could therefore be studied as a technological base adaptable to various use cases: physical preparation, return to operational fitness, training at height, assisted vertical crossing, support for injured personnel, assistance during technical operations or experimentation with vertical mobility solutions. At this stage, these perspectives are not qualified operational capabilities. They should be considered as areas of study requiring technical, regulatory and operational adaptations according to the constraints of each use case. MBS INDUSTRY's teams are able to support you in assessing and developing these topics.



KUEHN Sébastien | CTO
+33 (0)6 87 81 68 41
tech@mbs-industry.com
www.mbs-industry.com
3 rue Jacques Daguerre | 68000 COLMAR | FRANCE



MONKILOWATT

Monkilowatt develops hybrid and mobile energy solutions ranging from small to medium power units (3–100 kVA).

*As a specialist in mobile solar power generation and energy storage, we enable **complementarity with generators in operational environments**. Our products are all **plug-and-play**, robust, rapidly deployable, and can natively integrate a generator or interface with an external generator or an electrical grid.*

*Our objective is to **reduce fossil fuel consumption in order to reduce logistical constraints**.*

CONTAINWATT



Containwatt is a mobile 45 kVA solar power plant integrated into a standard KC20 container. It can be deployed in less than one day by a three-person team.

The key feature of Containwatt is the deployment of **150 m² of solar panels at a height of 3 meters**, allowing the ground area beneath the structure to remain fully usable for operational activities. To achieve this, Monkilowatt offers two optional deployment configurations :

- a dedicated 23 m² tent model developed with UTILIS;
- a 23 m² semi-rigid shelter developed with C-Lines.

A single KC20 can integrate :

- up to **30 kWp** of solar generation ;
- **80 kWh** of battery storage ;
- accomodation capacity for up to 6 tents.

ContainWatt can operate independently or in hybrid mode with a generator or electrical grid.

The solution is particularly well suited for long-duration deployments (>6 months) on low-mobility rear-base camps. It has been successfully evaluated by the French Armed Forces as part of the ECOCAMP program.



WATTONBOARD



WattOnBoard is an ultra-mobile hybrid solar generator designed and manufactured in France. The system combines silent operation, low thermal signature, rapid deployment capability and high operational flexibility.

This autonomous **10 kVA** solar power unit includes **18 kWh** of battery storage and deploys 4.5 kWp of solar panels in less than 30 minutes by a single operator, without requiring any tool. **Plug-and-play, ruggedized, durable, and tropicalized**, WattOnBoard can provide full electrical autonomy or significantly reduce generator fuel consumption.

Multiple WattOnBoard units can be interconnected (up to 6 units) to increase power and form a three-phase system. To ensure continuous energy supply, the system can be **coupled with generators** and will automatically manage the back-up power production in case of insufficient solar production.

Mounted on a trailer, it can be deployed directly from it. It can be transported by truck, on a KC20 flatbed, in a van, or even by helicopter (optional). Forklift pockets are integrated for easy handling with a forklift.



de la Fourniere Thibault | Directeur des Opérations
+33 (0)6 71 17 88 37
tdelafoourniere@monkilowatt.fr
www.monkilowatt.fr
4 avenue Louis Blériot | 31570 Sainte-Foy-d'Aigrefeuille | France

Lalane Jean-Marc | Associé-fondateur
+33 (0)6 08 73 88 11
jmlalane-ext@monkilowatt.fr
www.monkilowatt.fr
4 avenue Louis Blériot | 31570 Sainte-Foy-d'Aigrefeuille | France



MUSTHANE

Musthane is a French company specialized in the design and manufacturing of flexible composites made from rubber-coated reinforced textiles. Our solutions enhance the survivability and mobility of operations and vehicles in marine, land, and air environments.

We control the entire supply chain, from raw material formulation and manufacturing to final product delivery, ensuring process control, traceability, quality, and reliable lead times.

In the defense sector, our expertise is structured around two complementary pillars:

Design to Flexibility® - Solutions based on flexible and resilient structures: flexible tanks, inflatable jacks, pneumatic pipe plugs, lifting bags.

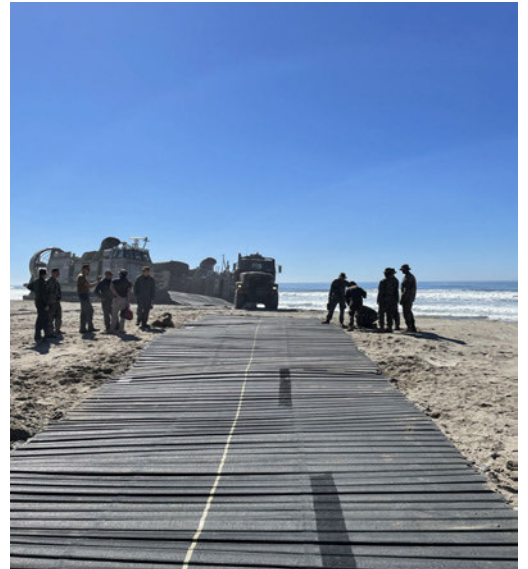
Design to Mobility® - Equipment designed for rapid deployment operations: helicopter landing mats, forward area refueling systems, temporary access roads.

HELIPAD AND TEMPORARY ACCESS MATS

Musthane designs and manufactures ground protection and mobility mats that improve the mobility and safety of vehicles and aircraft in challenging environments.

Our helicopter landing mats (HELIPAD) create a rapidly deployable landing zone that reduces foreign object debris (FOD) and the brownout effect, protecting helicopter rotors and engines while reducing maintenance requirements during operations on unprepared terrain.

Temporary access road mats reinforce soft or degraded ground to create temporary roads and access paths for wheeled vehicles, enabling safe traffic flow and rapid deployment in operational or emergency environments.



FLEXIBLE TANK

Musthane designs and manufactures flexible tanks for the storage and distribution of potable water, raw water and wastewater for operational bases, temporary camps and intervention areas.

Our potable water tanks comply with European sanitary regulations, ensuring the safety and quality of the stored water. Thanks to our engineering department, we are able to design tanks of any capacity according to the customer's specifications, meeting specific needs for water storage, transport or distribution in field operations.



Musthane

Reza Rosier | Directeur Général
+33 (0)3 28 37 00 40
musthane@musthane.com
www.musthane.com
53 rue de la République | 59780 Willems | France



PANOPTÈS

Traceability, RFID, IoT and connectivity expertise are at the core of Panoptès's business.

A French technology company specialising in the capture and exploitation of field data for supply chain, industry and critical operations. The Panoptès group designs software platforms and connected solutions combining RFID, IoT, mobility and artificial intelligence to transform every physical event into actionable data. Panoptès offers an integrated approach bringing together software publishing, system integration and field equipment, backed by over 30 years of expertise in tracking equipment, products and goods flows across large-scale national deployments with major players in defence and security, industry, energy, aeronautics, transport and logistics, distribution and retail.

Its solutions enable organisations to optimise flows, automate operations and strengthen real-time visibility of assets across all their movements.

ATHOS MRO



Athos MRO is a software platform developed by Panoptès, dedicated to Maintenance, Repair and Overhaul (MRO) and the lifecycle management of critical equipment, compliant with ATA Spec 2000 standards and NATO environment requirements. It ensures complete asset traceability, configuration management, maintenance operation tracking and control of associated logistics flows. Through the native integration of RFID, IoT and secure mobility technologies, Athos MRO automatically captures field events and guarantees the integrity, continuity and reliability of technical and logistics data. The solution streamlines the management of parts, serial numbers, intervention histories and operational statuses, contributing to operational technical availability and regulatory compliance. Athos MRO integrates with existing systems and meets the requirements of aeronautical, military and industrial organisations operating in critical environments.



KLIK



KLIK is Panoptès's RFID solution dedicated to industry and asset management. Instant inventories, flow tracking across factory or warehouse environments, real-time stock reconciliation without any break in traceability. Natively connected to Moov&Track, KLIK turns every read point into actionable data. Rapidly deployable, it adapts to the most demanding operational constraints.



MOOV&TRACK



Moov&Track is Panoptès's sovereign data hub: a central engine that aggregates, orchestrates and delivers traceability data from all sources : RFID, AutoID, geolocation, IoT, third-party solutions. Multi-site, real-time, hosted in France. The technical backbone of KLIK and Athos, it integrates seamlessly with both Panoptès solutions and the full range of identification and mobility systems available on the market.



PROENGIN

Proengin provides advanced detection solutions designed for first responders operating in high-risk, time-critical environments. Deployed by civilian responders, HazMat units, and Forces, Proengin systems provide a single, universal capability covering a wide spectrum of threats in all their forms, including CWAs, TICs, pharmaceutical-based agents, Novichok agents, and opioids, as well as unknown, emerging, binary, and homemade threats. Based on flame spectrophotometry, these solutions deliver high sensitivity and immediate results without reliance on libraries. With a response time in seconds against up to minutes for library-based technologies, Proengin delivers early warning when every second counts. In real-world conditions, those seconds can mean the difference between controlled exposure and irreversible consequences, between effective decontamination and uncontrolled spread.

FRONT-LINE CHEMICAL DETECTION



Portable solutions, such as the AP4C+, are designed for rapid deployment and immediate use by agile teams. Lightweight, rugged, and easy to integrate into operational gear, including vests and bags, the system enables hands-free missions while offering visual, audio, vibration, and discreet dark-mode alerts. It detects unknown substances, sprays, homemade mixtures, binary agents, CWAs, and toxic industrial chemicals, delivering early warning during terrorist attacks, industrial incidents, sensitive site security or public events. A critical asset for front-line units, it enhances operational safety, mobility, and rapid decision-making in time-critical scenarios.



SAMPLING & TRACE DETECTION



To address evolving threats increasingly encountered in non-gaseous forms, Proengin handheld detectors can be combined with the S4PF sampling solution to extend detection capabilities to liquids and solids. This combination provides full-spectrum coverage, from aerosols and vapors to persistent contamination and trace-level hazards. Integrated into frontline operations, the solution enables rapid detection within seconds, including against modified, homemade, or emerging threats often absent from traditional libraries. By enhancing detection of complex substances directly in the field, Proengin solutions strengthen early warning, accelerate decision-making, and improve operational response and risk mitigation in critical environments.



REMOTE ROBOTIC & DRONE-BASED DETECTION



Detectors can be seamlessly integrated into drones and robotic platforms to extend operational reach and optimize resource deployment. Easily deployed in place of operators, these systems support hazardous area assessment after fires, industrial accidents, terrorist incidents, customs inspections, and sensitive site protection while reducing exposure. Combined with the Proengin SHIELD ecosystem, they provide real-time mapping, mission cartography, and full situational awareness beyond simple alarm functions. This robotic sensing capability enhances coordination, accelerates decision-making, and improves operational safety and efficiency during interventions and large-scale security operations.



Proengin

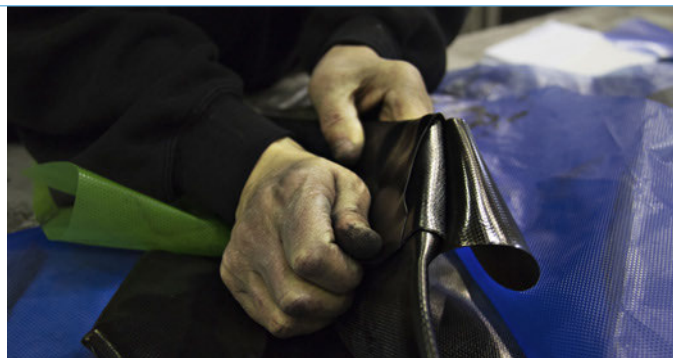
Jérôme Le Bris | Director Sales Europe
+33 (0)6 04 67 82 44
jerome.lebris@proengin.com
www.proengin.com
1 rue de l'industrie 78210 | 78210 Saint Cyr L'Ecole | France



PRONAL

With over 65 years of experience working with world armed forces, Pronal designs perfectly tailored solutions for oil and drinking water logistics.

Our solutions can be deployed and set up quickly on-site. They can be easily transported: mounted on trucks, suspended by helicopter, or towed by vehicles. These mobile solutions are suitable for transport by various means: land, sea, or air.



SEAL DRUM / TOWABLE



Flexible storage tanks are designed to refuel forward operating units on board aircraft, helicopters, and vehicles.

Depending on their capacity, SEAL DRUM tanks can be transported, slung, or rolled. Highly robust due to their material and hot-molding manufacturing process, they can be dropped when full from a height of 12 meters for the 200-liter tank and 5 meters for the 1000 and 1900-liter tanks. When empty, the folded volume represents only 15% of the filled volume.

The trays are equipped with a self-sealing fitting allowing filling/emptying via a coupler, and lifting rings ensure connection to slings used under helicopters. The articulated tow bar is only used on the 1000 and 1900 liter models for towing and pushing in any direction.



FLEXIBLE WATER DRINKING TANK & MOBILE DRINKING WATER TREATMENT PLANTS



Pronal develops logistics solutions for fuel and water using a variety of flexible tanks, pumps, and fuel filtration systems for agile and secure fluid transport and storage. Pronal equipment is expertly designed for versatility, whether for aerial delivery by helicopter or ground transport by truck, and includes durable flexible fuel and water storage tanks tailored to the needs of military operations. Pronal's mobile drinking water treatment stations are a key asset, providing clean drinking water to populations. These mobile drinking water stations demonstrate Pronal's ability to deliver essential services in emergency situations or remote areas, ensuring access to clean water. This reflects our commitment to supporting humanitarian and military efforts through innovative engineering solutions.



FUEL BOLTED TANK (RAM)



Fuel bolted tank (RAM): Capacity of 135,000 US gallons (500 m³), transport in two ISO 20' containers, assembly/disassembly in 5/6 days.



RENAULT TRUCKS

Renault Trucks Emergency & Defense is a trusted global provider of tactical mobility and logistical solutions, dedicated to supporting armed and security forces as well as defense operators worldwide. Building on Renault Trucks' industrial strength and decades of operational experience, we design and manufacture robust, reliable, and mission-ready vehicles engineered to perform in the most demanding operational environments. Our proven solutions combine durability, adaptability, and operational efficiency, ensuring forces can deploy, sustain, and accomplish their missions with confidence, wherever and whenever it matters most.

FPTL LIGHT URBAN FIRE TRUCK



Compact and highly responsive, the FPTL (Light Urban Fire Truck) is a light pump tender engineered for rapid response operations in urban and peri-urban environments. Built on the Renault Trucks D12 P4x2 Fire and Rescue chassis, it features a 12-ton GVW, a 240 hp Euro 6 engine, a 4-door cab with seating for 6, a 3350 mm wheelbase, and an Optishift 8AP automated gearbox. Designed to combine manoeuvrability, operational efficiency, and versatility, it provides firefighters with a reliable and agile platform for first-response missions.



FPT URBAN FIRE TRUCK



Versatile and proven, the FPT (Urban Fire Truck) is a benchmark pump tender for everyday rescue and firefighting missions. Built on the Renault Trucks D15 4x2 Fire and Rescue platform, it delivers up to 280 hp Euro 6, a 4-door cab, and configurations designed to combine payload capacity, crew comfort, and operational efficiency.



CCR RURAL TANK TRUCK



Designed for rural environments and difficult access conditions, the CCR (Rural Tank Truck) is based on a Renault Trucks D 4x4 Fire and Rescue chassis. With engine outputs from 250 to 320 hp and configurations up to 16 tons, it offers the robustness and traction needed to operate confidently on the most demanding terrain.



CCF FOREST FIRE TRUCK



A true specialist in off-road operations, the CCF (Forest Fire Truck) is designed for forest fire response and missions in challenging environments. Based on the Renault Trucks D 4x4 Fire and Rescue, it combines performance, safety, and off-road capability. With dedicated equipment such as the Optishift 8AP automated gearbox, wading depth up to 900 mm, and an electric winch, it is ready to meet the demands of the most challenging interventions.



Savornin Franck | Commercial Director
+33 (0)6 65 89 53 98
franck.savornin@renault-trucks.com

Saez Sonia | Key Account Manager
+33 (0)6 65 89 63 25
sonia.saez@volvo.com



SN ZHENDRE

Zhendre, the expertise and know-how brand of Eiffage Énergie Systèmes, has been designing and producing mobile solutions for extreme conditions in the region of Bordeaux since 1955: converted containers, air conditioners, and cold rooms. ISO 9001/14001 certified and specialized in HVAC solutions, it offers standard and custom-made equipment for the Defense, the Industrial, and the Humanitarian sectors.



MOBILE AIR CONDITIONERS



Zhendre relies on over 50 years of expertise in climate engineering to design its reliable and robust mobile HVAC solutions. Deployed in theaters of operation and extreme environments, they power tents, shelters, and medical facilities. The range is based on two models: the Zephyr, a versatile all-terrain air conditioning solution, and the Sirocco, capable of covering larger volumes. Both have an electric heating option.



REFRIGERATED CONTAINERS



Since 1955, Zhendre has been designing robust refrigerated containers capable of maintaining temperatures as low as -20°C when the outside temperature is +50°C. Self-sufficient thanks to their integrated generator, they are designed for harsh environments and areas with limited infrastructure. The main supplier of food storage containers to the French Army, Zhendre also equips several European and international armies, as well as the United Nations for its peacekeeping operations around the world.



CONVERTED CONTAINERS



Zhendre uses its expertise in container conversion and thermal management to design turnkey containerized solutions tailored to the operational needs of the Armed Forces. Whether a communication hub, sensitive storage facility, or workshop for maintaining equipment in operational condition, each module offers a mobile, durable, and robust work environment designed to operate in extreme environments.



In the field, uncertainty around identity can put missions, forces, and civilians at risk. Yet in these complex operational environments, reliably establishing who is who remains a constant challenge.

Thales Evidence and Investigation Suite - Tactical Edition addresses this need, bringing forensic-grade biometrics directly to the field. By enabling forces to rapidly capture, process, and identify multimodal biometric data (fingerprints, palmprints, facial images and iris scans) in any environment, it turns uncertainty into actionable insight.

The result is more than identification: it is identity assurance in near real-time, thereby empowering deployed forces with the clarity to act, protect, and make informed decisions in fast-moving, high-stakes situations.

ACCOUNTING FOR THE FALLEN



In the aftermath of conflict or natural disasters, the identification of human remains is mission critical. Deployed forces and first response teams must be able to establish identity, often in austere environments where remains may be degraded, evidence fragmented, and time constraints critical.

To meet this challenge, **Thales offers a mission-ready multibiometric solution** designed to cover all the steps required for the biometric identification of a body.

Thales Evidence and Investigation Suite (TEIS) – Tactical Edition includes pre-deployment biometric enrollment to establish reliable identity baselines, and brings **specialized biometric capture capabilities**, including **contactless collection** methods, directly at the point of need.

TEIS – Tactical Edition delivers **fast, reliable identity confirmation** using centralized interoperable workflows, as well as on-device watchlists search and match.

Together, these capabilities help armed forces and first response teams accurately identify the deceased, provide closure to families, and deliver certainty where it matters most.



SUPPORTING CIVILIAN FLOWS. EXPOSING THREAT ACTORS



In operations involving displaced persons and migrant populations, establishing identity quickly and reliably is essential to both protect civilians and maintain security.

Thales Evidence and Investigation Suite - Tactical Edition enables forces to register individuals from first contact using multi-modal biometric tools, ensuring trusted identity records even in austere environments.

By combining **culturally adaptive identification methods**, **real-time watchlist screening**, and **streamlined mobile workflows**, the solution allows large populations to be processed efficiently while immediately flagging potential threats hidden within civilian flows.

The result is a balanced approach that helps forces secure operations, safeguard vulnerable populations, and maintain control in high-pressure situations.



TITAN DEFENSE

TITAN DEFENSE is the global specialist in refueling solutions for military use in tactical environments, including high mobility and flexible fuelling capabilities.

We design, manufacture and support tactical refuellers, hydrant dispensers, containerized solutions, deployable systems and equipment for special operations and FARP.

offers maintenance and refurbishment services as well as expertise in training and technical support.



TACTICAL REFUELLER



TITAN-ZR7 is the last high mobility refueller designed by TITAN DEFENSE. Built on a Mercedes Benz ZETROS 6x6 chassis, this tactical refuelling vehicle, dedicated to the armed forces in advanced fields, can make impressive crossings, up to 0.8 m and 35° climb.

Adapted to harsh environments, this off-road chassis supports a complete petroleum unit composed of a 7,000L tank and a refuelling module. For this vehicle, the torsion-free platform of the tank offers better off road capabilities. The unparalleled flexibility offered by the torsion-free technology ensures the infallibility of the fuelling unit. Even the most uneven terrain can be traversed without risking damage to the tank.

This high-performance refueller can reach a flowrate of 1300 LPM thanks to 2 hoses, underwing and overwing, with interchangeable nozzles and pressure-controlled flowrate.



HYDRANT DISPENSER



TITAN DEFENSE high flow rate hydrant dispenser is equipped with 2 deck hoses, with a flowrate of 1500 LPM each, as well as a 25 m hose at 1000 LPM.

Used by the French Armed Forces, this hydrant dispenser is daily deployed on hydrant airports, on all types of military aircraft, in particular in-flight refueling type A330MRTT, KC135.

Commercial refueling is possible because all EN and JIG safety standards are taken into account from the design stage.



5000 L AIRCRAFT REFUELLER



TITAN DEFENSE 5000L refueller is a compact vehicle adapted to refuel on base.

Equipped with a distribution line of 30m, with a flow rate of 400 LPM, with interchangeable nozzle, this vehicle can refuel rotary wing. It can also provide defueling functions.

It is compatible with all types of fuel.

Road homologated (ADR), the refueller is also international aviation standard compliant (JIG, EN).



Dufloux Sébastien | Defense Solutions Director
 +33 (0)6 74 82 96 24
s.dufloux@titan-defense.com
www.titan-defense.com
 170 Rue Clément Ader | 69400 Arnas | France



TOUTENKAMION GROUP

Toutenkamion Group is a French industrial group specialising in mission-critical mobile solutions, generating annual revenues of €50 million and employing more than 400 people.

Recognised as a European leader in the design, manufacturing, and conversion of mobile units, shelters, and embedded systems for demanding operational environments, the Group develops robust and deployable solutions for security forces, emergency services, and crisis management organizations.

Building on strong engineering capabilities and extensive expertise in integrated technologies, Toutenkamion Group designs high-value mobile solutions dedicated to command and control, intervention, medical support, civilian protection, and operational coordination missions. The Group supports its customers throughout the entire project lifecycle, from system design and qualification to in-service support, MRO services, and spare parts management.

MOBILE MEDICAL SOLUTIONS AND DEPLOYABLE HEALTHCARE FACILITIES



Designed as shelters, deployable modules, or mobile medical units, these solutions provide practitioners with operating conditions comparable to fixed medical infrastructures while ensuring mobility, autonomy, and rapid deployment capabilities.

Transportable by road, air, or sea, these solutions are designed to operate in extreme climatic environments and integrate all equipment required for medical practice and emergency care operations.



RAPID RESPONSE AND FAST DEPLOYMENT OPERATIONS



Support quads, 4x4 pick-ups, and mobile recognition or rescue units are designed to provide high agility, maximum autonomy, and rapid deployment by small operational teams.

These solutions can integrate detection, recognition, communication, and surveillance equipment, as well as drone control stations, in order to address the high level of uncertainty inherent to emergency situations and sensitive operations.



DECONTAMINATION, PROTECTION, AND REHABILITATION OF DISASTER-AFFECTED AREAS



The water decontamination skid is a representative example of a mobile solution enabling rapid intervention directly at the source of pollution.

Energy-autonomous, connected, and easily deployable, this mobile unit allows the simultaneous treatment of multiple water flows, offering high decontamination capabilities and automated supervision of operations. Its ergonomic and modular design facilitates deployment in flooding scenarios, accidental pollution incidents, or major environmental disasters.



BOURDAIS Fabrice | Director of Defense & Aerospace Business
+33 (0)2 38 95 50 59
f.bourdais@toutenkamion-group.com
www.toutenkamion-group.com
ZA La Janais La Haute Calvenais | 35176 Chartres de Bretagne | France



TYNDALL FX

*Tyndall FX is a French deeptech building a sovereign spatial intelligence platform for drones used in civil protection and crisis management. Our software turns drone video into a real-time 3D operational picture with embedded AI – directly on the field, no cloud, no satellites, no LiDAR. Two products: **Terramind** (real-time 3D + AI) and **Terraswarm** (multi-drone fusion). Drone-agnostic – STANAG 4609 and MAVLink compatible – open API for integration with GIS and control systems.*



TERRAMIND



Terramind turns any compatible drone's live video into a real-time, photorealistic **3D model** and **elevation map** of the disaster scene — directly on the responder's tablet, during the drone's flight, with no cloud, no servers and no connectivity required.

Built for primo-intervention, the first drone overflight produces an immediate 3D scene that command posts and field officers can navigate, measure and annotate.

Use cases — **Earthquake or building collapse**: plan the safest approach, identify trapped persons or critical infrastructure and quantify the damage — rubble volumes, gap widths, slope of access routes — with **sub-2% accuracy on 3D distances, surfaces and volumes**. **Wildfire and forest fire**: real-time mapping of the fire perimeter and surrounding terrain, with elevation maps to anticipate propagation and keep ground crews safe. **Search and rescue**: embedded AI detects and tracks people, vehicles and dynamic objects directly on the 3D scene, accelerating triage and accountability. **Hazmat and industrial incidents**: stand-off reconnaissance of contaminated or unstable zones before sending teams in.



Designed for the field. Full processing on a standard Windows tablet — nothing to install on the drone, no external server. Compatible with **STANAG 4609** and **MAVLink**, runs on off-the-shelf drones (Parrot, Skydio, DJI). Open **REST API** and georeferenced exports (3D Tiles, GLB/OBJ, GeoTIFF) for integration with command-and-control systems and GIS platforms. Even if the drone is lost in the rubble, the 3D model and all measurements remain on the ground with the responders.

TERRASWARM



Terraswarm is a **multi-drone software platform** that merges the live video feeds of several drones into a single, shared **3D operational picture** of a disaster zone — built collaboratively on the field, in real time, with zero server dependency.

When time and area coverage are critical, Terraswarm lets a team of responders operate several drones in parallel and see one unified 3D scene instead of switching between independent video feeds.

Use cases — **Wide-area wildfire response**: multiple drones simultaneously map advancing fire fronts across the terrain, giving the command post one continuous view of perimeter and propagation. **Large-scale search and rescue**: divide the search zone among several drones, with AI person detection aggregated across the fused 3D scene to accelerate sweeps and triage. **Floods, landslides and major accidents**: parallel reconnaissance of long linear or fragmented impact zones, with rapid damage quantification across the whole area. **Multi-team operations**: each sector keeps its own drone but contributes to a common 3D model shared across the command structure.



Powered by the Terramind engine, Terraswarm extends its capabilities from single-drone operation to operational swarms. Drone-agnostic, **STANAG 4609** and **MAVLink** compatible, runs on off-the-shelf platforms. Designed for first responders: simple operator UI, no servers, no external dependencies. Open **REST API** and georeferenced exports for integration with command-and-control systems and crisis-management dashboards. The fused 3D scene remains available on the ground even if one of the drones is lost during the mission.



UNAC designs and manufactures specialized vehicles for the Defense sector. Based in France, the company controls the full industrial cycle: design, development, serial production, and operational readiness support. Its compact and modular platforms, as well as its engineering vehicles, are built to operate in demanding and constrained environments. UNAC designs vehicles tailored for mobility, support or engineering missions. UNAC specialises in the design of vehicles that can be airtransported, airdropped, helitransported under sling, robotic or armoured. Its design philosophy prioritizes robustness, mechanical simplicity and field reliability. An integrated industrial base enables rapid adaptation to customer requirements and controlled production, both in series and for specific mission-oriented programs.

RIDER



RIDER is a high-mobility, robust, compact 4x4 vehicle with no electronic devices, designed for Special Forces and rapid deployment forces. It can be air-transported, heliborne under slings, or airdropped by parachutes. Operational units use it in a wide range of roles: mobility, logistics with a one-tonne payload, fire support, towing mortars or trailers, mobile command centre, and light reconnaissance in austere environments. 250 RIDER vehicles are currently in service with the French Army, deployed within the 11th Airborne Brigade. It is a field-proven platform, supported in service by UNAC as the manufacturer.



RIDER-UGV



The RIDER-UGV is a modular unmanned ground robotic platform developed on the qualified RIDER platform. The industrial maturity of the RIDER enabled UNAC to win the ROBIN contract for 34 systems, demonstrating the platform's ability to integrate complex mission equipment. The RIDER-UGV generalizes this approach: on a single qualified and supported platform, a wide range of equipment can be plugged in and operated, including a teleoperated fire-support module, ISR sensors, a CBRN module, a communications relay, a logistics platform, and a MEDEVAC module. It is a single qualified platform for a broad spectrum of roles.



ROBIN



ROBIN (ROBot for INvestigation) is a teleoperated ground-based robotic system developed from the qualified RIDER platform, which is common to all UNAC robotic solutions. Equipped with optical sensors and a robotic arm, ROBIN enables observation, inspection, and interaction with the environment to ensure the safe passage of a convoy. Designed as a specialised operational tool, ROBIN prioritises ease of use, robustness, and reliability in real-world operational conditions.



UTILIS

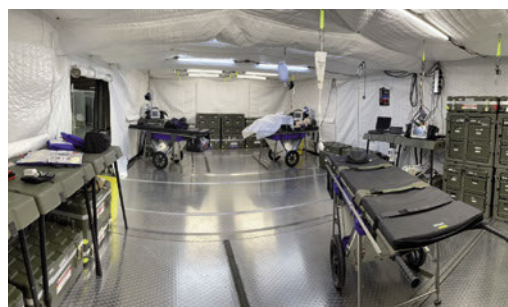
For nearly 30 years, UTILIS has been designing tailored, robust and easy-to-deploy medical infrastructure to support armed forces, civil protection organisations, NGOs and healthcare stakeholders in crisis situations and constrained environments.



MOBILE MEDICAL RESPONSE IN CRISIS SITUATIONS



Thanks to its expertise in integrated tents and containers, UTILIS covers the entire intervention chain: victim triage, first aid, stabilisation, life-saving surgery, temporary hospitalisation, medical logistics and team protection. These solutions are designed to be easily transportable, rapidly operational and adapted to local constraints.



FIELD HOSPITALS: RECOGNISED EXPERTISE AT EVERY LEVEL OF INTERVENTION



UTILIS is now a recognised expert in the design and supply of mobile and integrated field hospitals. From **ARCS** for life-saving surgery to Role 1 and Role 2 capabilities, its solutions adapt to every level of medical intervention. **TMS™** tents provide modular infrastructure capable of managing all types and scales of crisis, while **ELYTRON™** enables rapidly operational medical capabilities to be deployed as close as possible to populations or casualties.



MAG 20 ORYX™: THE TENT DESIGNED FOR EMERGENCY CARE



A medical version of the MAG 20, this 18 m² tent provides an ultra-lightweight and air-droppable solution for life-saving surgery in constrained environments. Deployable in just a few minutes, it combines shelter, equipment, monitoring, medical cold chain and surgical table in a system optimised for urgent care.



ULTRA-MOBILITY FOR FIRST AID OPERATIONS



Among UTILIS' latest innovations, **DRACO™** and **CROSSMED™** embody a new approach to ultra-mobility. As a module transferable onto a GBC-type carrier, DRACO™ can deploy a functional 15 or 30 m² space in just a few minutes, as close as possible to the intervention area. It complements CROSSMED™, a mobile assistance case designed for rescue operations in demanding terrain, which facilitates the rapid transfer of first aid equipment to casualties and deployed teams.



WARYME

WaryMe is a software and cloud services publisher specializing in mobile solutions for people safety, crisis management and mission control. The solution integrates advanced features around emergency alert, reporting, real time tracking, security plans and crisis management, mobilization and mass notification.

WaryMe has more than 350 customers, including sensitive sites (Seveso, nuclear), public transport authorities, events (festivals), companies, local authorities and establishments open to the public.

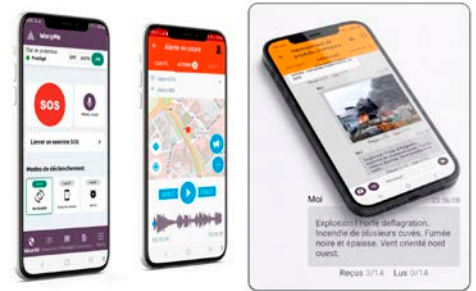
Designed and developed in France, the solution is hosted in the cloud (SaaS) for rapid and flexible deployment. It can be made autonomous and deployed on all types of terrain, via an Edge computing installation and private 4G network.

THE WARYME MOBILE APPLICATION



Involving frontline staff in the overall security framework enables faster understanding, decision-making and response in the event of a major incident. Real-time information sharing (distress alerts with location data, audio or video recordings, or reports) allows the situation to be assessed and appropriate measures to be taken. Crisis scenarios are modelled in the form of collaborative action plans. Safety instructions and emergency procedures are disseminated immediately.

- SOS alert (voluntary, lone worker protection)
- Reporting
- Instant messaging
- Video conferencing
- Real-time GPS tracking
- Collaborative action plans
- Logbook



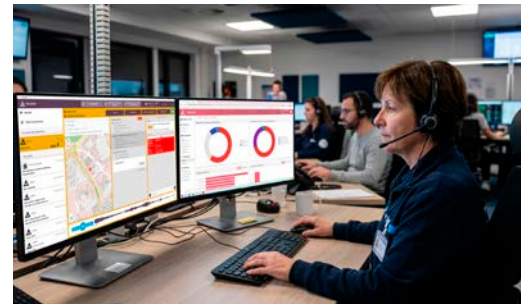
DISPATCHING AND CENTRALISED INCIDENT MANAGEMENT



The control centre software enables centralised management of WaryMe security incidents on a large screen, whether from a security PC, an Urban Supervision Centre or a crisis response unit. This tool allows teams in the field to be monitored and directed in real time, ensuring optimal coordination during operations.

The solution is simple and intuitive. Its modern interface incorporates best practices in terms of user experience. It is regularly praised for its ease of use, ensuring widespread adoption.

To unify command and increase the overall responsiveness of the client's security ecosystem, WaryMe APIs (application programming interfaces) enable integration with most comprehensive security hypervisors.



CLOUD OR ON-PREMISES HOSTING



The WaryMe solution offers complete flexibility in terms of hosting to suit all deployment and security requirements. Three distinct options are available. Shared SaaS hosting ensures quick and easy deployment for an immediate start.

Where security and performance requirements dictate, WaryMe can be deployed on a dedicated cloud infrastructure, offering complete isolation and guaranteed resources.

For the most critical scenarios or highly constrained environments, on-premises installation is possible directly within the customer's IT system. This option allows operation on a private infrastructure that is completely disconnected from the internet, with the possibility of operating within a private 4G bubble to ensure autonomy and resilience in the field.



Berger Boris | CEO
+33 (0)6 37 84 37 58
boris.berger@waryme.com
www.waryme.com
1137A Avenue des champs blancs | 35510 CESSON SEVIGNE | France



WILLIAMSON ELECTRONIQUE

WILLIAMSON ELECTRONIQUE, French leader, designs and manufactures autonomous energy solutions, custom battery packs (primary/rechargeable), and electronic solutions for defense, aerospace, and security sectors. EN 9100-certified, we deliver reliable solutions from design to production, with integrated manufacturing in France.



PRIMARY BATTERIES - DISTRESS BEACONS

Williamson Electronic's primary batteries for distress beacons are designed for critical emergency applications where absolute reliability is essential.

Engineered to operate in extreme environments, they provide a long-lasting and reliable power supply to distress beacon systems, which must remain operational after shock and in extreme temperature conditions.



ENERGY CASES / CHARGING CASES - OPERATIONAL ENERGY

WILLIAMSON ELECTRONIQUE's Energy cases are high-capacity, portable solutions designed to provide reliable power in often challenging environments: they can even recharge at -30°C. Developed for field operations, remote sites, and mobile applications.

Charging cases are designed to control and secure the charging of our batteries. They allow battery conditioning for IATA air transport and long-term storage of the cells.



MODULAR BATTERIES - STATIONARY POWER APPLICATIONS

For applications requiring very high levels of energy and power, WILLIAMSON ELECTRONIQUE integrates modular batteries into the LFP. These batteries can be assembled in series and parallel to achieve very high voltage and capacity levels, up to several hundred kilowatt-hours (695 kWh maximum).



LABELS

WILLIAMSON ELECTRONIQUE is certified EN9100 and actively engaged in the most influential industry groups, collaborating with partners to uphold and enforce sovereignty.



CONNESON Maxime | Head of Aeronautics & Defense Business Unit
 +33 (0)6 82 57 39 18
 maxime-connesson@willelec.com
 www.williamson-electronique.fr
 8 Rue du Moulin Casse | 44340 Bouguenais | France



*Quand l'excellence
devient **VITALE***



**Groupement des industries
françaises de défense et de sécurité
terrestres et aéroterrestres**

39 rue Mstislav Rostropovitch
75017 Paris
+33 (0)1 44 14 58 20
contact@gicat.fr

gicat.com